

COCOON  
4 CAMERA  
HOME SECURITY SYSTEM  
WITH DVR



Model Number: HE180106

**INSTRUCTION MANUAL**

VERSION 1.5





# Important

**Getting the most out of your 4 Camera Home Security System with DVR:**



## **Read the manual**

It will help you set up with ease



## **Visit [www.winplus.com.au](http://www.winplus.com.au)**

We have additional support videos and guides



## **Call After Sales Support - 1300 663 907**

Or email [customercare@winplus.com.au](mailto:customercare@winplus.com.au) - we're always happy to help

# Warranty Note

**If you experience any issues with this product or its performance is not what you had expected, please contact us at Winplus before returning the item to the store.**

**It is likely that we can resolve any problems for you via phone or email.**

**We can be reached on:**

**Phone: 1300 663 907 (Mon - Fri; 8:30am - 6:00pm AEST)**

**Email: [customercare@winplus.com.au](mailto:customercare@winplus.com.au)**

**Web: [www.winplus.com.au](http://www.winplus.com.au)**

# COCOON™

## HOME SECURITY SYSTEM WITH DVR

# Warranty Details

---

REGISTER YOUR PURCHASE AT [www.aldi.com.au/en/about-aldi/product-registration/](http://www.aldi.com.au/en/about-aldi/product-registration/) TO KEEP UP-TO-DATE WITH IMPORTANT PRODUCT INFORMATION



---

The product is guaranteed to be free from defects in workmanship and parts for a period of 12 months from the date of purchase. Defects that occur within this warranty period, under normal use and care, will be repaired, replaced or refunded at our discretion. The benefits conferred by this warranty are in addition to all rights and remedies in respect of the product that the consumer has under the Competition and Consumer Act 2010 and similar state and territory laws.

Our goods come with guarantees that cannot be excluded under the Australian Consumer Law. You are entitled to a replacement or refund for a major failure and for compensation for any other reasonably foreseeable loss or damage. You are also entitled to have the goods repaired or replaced if the goods fail to be of acceptable quality and the failure does not amount to a major failure.

---

#### AFTER SALES SUPPORT

  1300 663 907

 [customercare@winplus.com.au](mailto:customercare@winplus.com.au)

MODEL: HE180106 PRODUCT CODE: 63131 12/2018



# Safety Instructions

## Read Instructions

Carefully read all safety instructions and the user manual before operation.

## Power Source

Only use the supplied power adaptors. Using other power adaptors may cause damage to the unit or potentially start a fire. Power adapters for INDOOR use only. The electrical socket outlet shall be installed near the equipment and shall be easily accessible.

## Do not expose the DVR Unit to Moisture

Avoid installing the DVR unit in a location with high humidity or in a location where liquid may spill onto the unit. Liquid may cause a short circuit which can result in electric shock or fire.

## Do not expose the DVR to Heat Sources

Do not install the DVR near any heat sources such as radiators, stoves or other appliances that can generate heat.

## Do not expose the DVR to Dust

Do not use the DVR unit in dusty areas as dust can impair electronic components.

## Cleaning the DVR Unit

Unplug all equipment from the wall outlet before cleaning. Do not use liquid aerosol cleaners. Use a damp soft cloth for cleaning.

## Lightning

Unplug all equipment during lightning storms to prevent damage. Unplug the DVR unit if it will not be used for long periods of time.

## Modifications & Attachments

Never add any attachments and/or equipment without the approval of the manufacturer. Unauthorized modifications may result in fire, electric shock or other personal injury and may void your warranty.

## Ventilation

Do not block any ventilation holes. Do not place objects on top of the DVR unit or cover the ventilation holes on the sides of the DVR unit.

## Grounding Mounted Equipment

If mounting the DVR unit onto a rack, ensure the rack is properly grounded before turning the power on to prevent electric shock and fire when using the DVR unit.

## Do not open DVR Unit Case

There are no user serviceable parts inside the DVR unit. Modifying any parts may void your warranty.

## Battery

**CAUTION:** Risk of explosion if battery is replaced by an incorrect type. Dispose of used batteries according to the instructions

**CAUTION:** Do not ingest battery, chemical burn hazard

This product contains a coin/button cell battery. If the coin/button cell battery is swallowed, it can cause severe internal burns in just 2 hours and can lead to death

Keep new and used batteries away from children

If the battery compartment does not close securely, stop using the product and keep it away from children

If you think batteries might have been swallowed or placed inside any part of the body, seek immediate medical attention

This DVR has been tested according to AS/NZS 60950.1 and EN 55032



ANGER if swallowed

## After Sales Support

 1300 663 907

 [customercare@winplus.com.au](mailto:customercare@winplus.com.au)

Model Number HE180106

# Contents

<b>Warranty Details</b>	<b>4</b>
<b>Safety Instructions</b>	<b>5</b>
<b>Parts List</b>	<b>8</b>
<b>Camera Specifications</b>	<b>9</b>
<b>DVR Specifications</b>	<b>9</b>
<b>Product Overview</b>	<b>10</b>
1.1 DVR Front and Side Panel	<b>10</b>
1.2 DVR Rear Panel	<b>10</b>
<b>DVR Initial Setup</b>	<b>11</b>
2.1 Initial Setup	<b>11</b>
2.2 DVR Unit Connections	<b>11</b>
2.3 Installation Location	<b>12</b>
<b>DVR Operation</b>	<b>13</b>
3.1 Powering on the DVR unit	<b>13</b>
3.2 Mouse	<b>13</b>
3.3 Setup Wizard	<b>13</b>
3.4 Main Screen	<b>13</b>
3.5 Navigating the DVR Menu & Logging in	<b>14</b>
3.6 Quick Pop-up Menu	<b>16</b>
<b>Mobile Phone Setup</b>	<b>17</b>
4.1 Use Apple or Android mobile to access footage	<b>17</b>
4.2 Download the Cocoon HD DVR App on your Mobile	<b>17</b>
4.3 Logging into or creating a Cocoon HD DVR Account	<b>18</b>
4.4 Adding your DVR device to the App	<b>18</b>
4.5 Navigating the App menus	<b>19</b>
4.6 Viewing your DVR footage	<b>19</b>
4.7 Take Screenshots (Photos) or Video	<b>20</b>
4.8 View Footage from DVR's Recorded Events.	<b>20</b>
<b>PC Setup</b>	<b>21</b>
5.1 Cocoon HD Software for PC Use	<b>21</b>
5.1.1 Installing Cocoon HD for PC	<b>21</b>
5.2 Logging into Cocoon HD for PC	<b>21</b>

5.3 Adding your DVR to the Cocoon HD for PC Software	22
5.4 Watching Footage on Cocoon HD for PC Software	22
5.5 PC Menu Overview	23
5.6 Taking a Screenshot with Cocoon HD for PC	24
5.7 Taking a Video with Cocoon HD for PCs	24
<b>Advanced Settings</b>	<b>25</b>
6.1 Main Menu - Setup	25
6.1.1 Basic	25
6.1.2 Live	26
6.1.3 Record	27
6.1.4 Schedule	28
6.1.5 Alarm	29
6.1.6 Network	30
6.1.7 Users	32
6.1.8 PTZ	33
6.1.9 Advanced	34
6.2 Main Menu - Search	34
6.3 Main Menu - Backup	35
6.4 Main Menu - Information	35
6.4.1 System	35
6.4.2 Event	35
6.4.3 Log	35
6.4.4 Network	35
6.4.5 Online Users	36
6.5 Main Menu - Disk Management	36
6.6 Main Menu - Logoff	36
6.7 Main Menu - Shutdown	36
<b>Disposal of Packaging</b>	<b>37</b>
<b>Disposal of Product</b>	<b>37</b>
<b>FAQs</b>	<b>38</b>
<b>Glossary of Terms</b>	<b>40</b>
<b>Repair and Refurbished Goods or Parts Notice</b>	<b>42</b>

# Parts List

- 1 x DVR Unit with 500GB HDD <sup>①</sup>
- 4 x IR Cameras <sup>②</sup>
- 4 x 18m BNC Cables <sup>③</sup>
- 2 x Power Adaptors <sup>④</sup> (DVR) & <sup>⑤</sup> (Cameras)
- 1 x Power Splitter Cable <sup>⑥</sup>
- 1 x 1m HDMI Cable <sup>⑦</sup>
- 1 x 1m Ethernet Cable <sup>⑧</sup>
- 1 x Mouse <sup>⑨</sup>
- 1 x DVR BNC Splitter Cable <sup>⑩</sup>

- 4 x Mounting Accessories for Cameras\*
- 1 x Instruction Manual\*
- 1 x Getting Started Guide\*
- 1 x Network Setup Guide\*
- 1 x Warranty Card\*
- 4 x CCTV Stickers\*

\* Not shown





# Camera Specifications

<b>Image Sensor:</b>	1/4" Colour CMOS Sensor
<b>Video Resolution:</b>	720P
<b>Video System:</b>	PAL
<b>Infrared IRs:</b>	24
<b>Day/Night mode:</b>	Smart IR Cut Filter
<b>Night Vision Distance:</b>	Max 24m
<b>Scan Frequency:</b>	50Hz
<b>Minimum Illumination:</b>	0 Lux (IR On)
<b>Backlight Compensation:</b>	Auto
<b>Electronic Shutter:</b>	1/50~10,000 AUTO
<b>Lens:</b>	F=3.6 ~ 60 degrees
<b>Operating Temperature:</b>	-10 – 50C
<b>Input Rating:</b>	DC 12V 780mA

# DVR Specifications

<b>Video Compression:</b>	H.264
<b>Video Input:</b>	4 x composite BNC
<b>Video Output:</b>	1 x BNC composite 1 x HDMI 1 x VGA
<b>Display Resolution:</b>	Up to: 1920 x 1080
<b>Record Resolution:</b>	Up to 720p each camera
<b>Record Speed:</b>	Selectable from 1 to 25 fps
<b>Recording Modes:</b>	Continuous, Manual, Motion Detection
<b>Playback Channels:</b>	1/4 channel split screen
<b>Network:</b>	LAN, DHCP, Dynamic IP, DDNS and P2P
<b>HDD Interface:</b>	1 x 2.5" SATA HDD, upgradable up to 4TB
<b>USB:</b>	2 x USB (for mouse and backup)
<b>PTZ Control:</b>	Built-in RS485 Port
<b>Mobile Surveillance:</b>	Supports iOS & Android
<b>Input Rating:</b>	DC 5V/2A

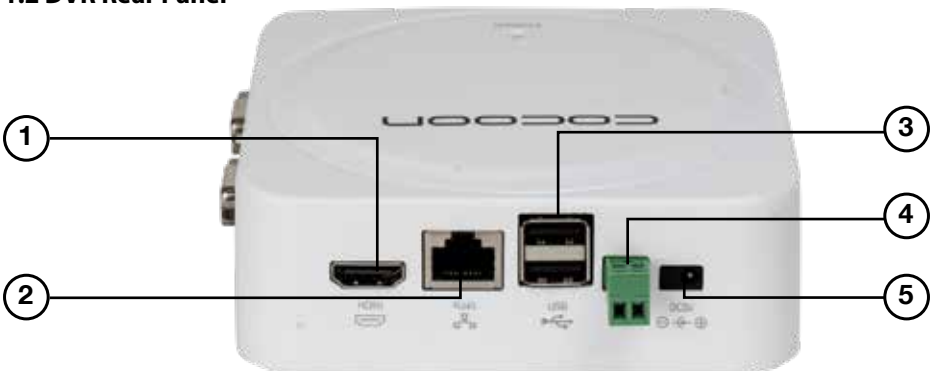
# Product Overview

## 1.1 DVR Front and Side Panel



1. PWR – Power LED lights up solid when powered on
2. VGA – Output using a VGA cable
3. Video Input/Output

## 1.2 DVR Rear Panel



1. HDMI Port
2. LAN – Ethernet connection to modem / router (required for remote viewing over internet or mobile)
3. USB Ports x2 – For mouse and flash drive backup / firmware updates
4. RS485 – For use with PTZ cameras (Cable and PTZ camera not included)
5. 5V Socket – Connect 5V Power Adaptor

### After Sales Support

1300 663 907

customer@winplus.com.au

Model Number HE180106

# DVR Initial Setup

## 2.1 Initial Setup

Prior to installing the home security system, we highly recommend that you test all components to ensure they are in good working order. To do this, the DVR unit must be connected (temporarily) to a HDMI compatible TV screen or computer monitor (not a laptop) to complete your initial setup. Once setup is fully complete, the TV screen or computer monitor can be disconnected and setup as per your requirements.

## 2.2 DVR Unit Connections

1. Connect each of the camera BNC extension cables to the camera and power connectors taking note of the labelling on the extension cable i.e. Do not connect the incorrect end of the BNC cable to the DVR or the camera as it will not function
2. Connect the other end of the BNC extension cables to the DVR BNC cable splitter, and then connect the DVR BNC cable splitter to the port marked "Video In/Out"
3. Connect the 4-way power splitter to each of the BNC extension cables (red)
4. Connect the power adaptor to the 4-way splitter cable and plug into a mains outlet, then switch the outlet on
5. Connect the included HDMI cable to the back of the DVR unit and connect the other end of the cable to your monitor or TV

### NOTE:

- You must switch your TV or monitor to the correct INPUT once the DVR unit has been powered on, for example HDMI 1
- Connecting the DVR to your laptop will not work unless it has HDMI input

6. Connect the mouse to the USB port (on the back of the DVR unit)

**NOTE:** Ensure you are connecting the 12v power adaptor with the larger pin to the 4-way splitter cable

7. Connect the other power adaptor to the DVR unit labelled DC5V and plug the other end into a mains outlet
8. Switch the outlet on. The DVR unit will begin the boot sequence

**NOTE:** Both the DVR unit and cameras operate as soon as they are connected to a power source and the power adaptors are switched on. To turn the cameras or DVR unit off, switch off the power adaptors at the power outlet.



# DVR Initial Setup

9. Cocoon DVR allows you to view footage remotely either on compatible Smartphone, Tablets or internet-ready Windows PCs. If you are wanting to set this up (instructions provided in section **4.1 Use Apple or Android mobile to access footage on page 17**) you must have a constant, smooth and stable broadband internet connection via your modem/ router.

To connect your DVR to the internet:

- a. Plug one end of the Ethernet cable into the back of the DVR into the 'RJ45' Port
- b. Plug the other end of the Ethernet cable into a spare LAN (Not WAN.) port on your network's modem/ router

## 2.3 Installation Location

Before installing the Home Security System, it is essential to plan where to locate the DVR unit.

Below are a few points to consider:

- The DVR unit should be positioned in a central location with easy access to mains power, cameras and installed cables
- If you plan to view footage over the internet or on your mobile phone, the DVR unit should also be located near and connected to your modem / router or ethernet network point
- Plan out where you would like to place your cameras and test all connections BEFORE permanently installing cables and cameras
- The DVR unit should be installed in a secure location to avoid tampering
- Do not place heavy objects on top of the DVR unit
- Do not block ventilation holes on the top and sides of the DVR unit or use in an enclosed area as this may cause overheating
- Cameras should be placed covertly indoors where you do not want to see them every day
- Outdoor cameras can be placed in plain sight to act as a deterrent to would-be intruders
- Cameras are weatherproof, however if installed outside should be done in protected areas, such as under eaves.

Once you have decided the location of the cameras and the DVR unit itself, use the supplied screws to install the cameras in place and setup the DVR unit as per the instructions provided in section **2.2 DVR Unit Connections on page 11**.

Once this is completed, you can setup the basic features of the DVR.

# DVR Operation

## 3.1 Powering on the DVR unit

1. Connect the power adaptor to the back of the DVR unit
2. Plug the power adaptor into a mains power outlet and switch the outlet ON
3. Once the power adaptor is connected to the DVR unit, it will proceed through the boot sequence



## 3.2 Mouse

1. USB Connection – ensure the mouse USB cable is connected to the back of the DVR unit
2. Left Mouse Button (LMB) – click to see main menu and make selections
3. Right Mouse Button (RMB) – click to return to previous screen or exit menu



## 3.3 Setup Wizard

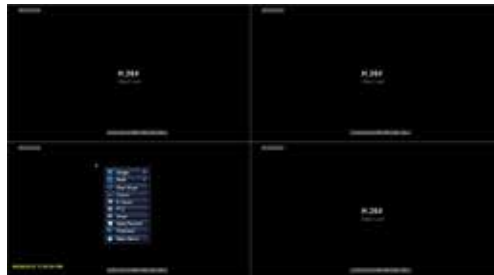
Before viewing footage on your monitor, smartphone or PC screen, the DVR must be fully setup and configured. Once the DVR has booted up and the start-up screen is displayed, the Cocoon DVR System will run a setup wizard to assist in setting up key features of the unit such as time & date format, language.

You can enable or disable the setup wizard to be shown on start-up screen by selecting or unselecting the check box.

## 3.4 Main Screen

Once the DVR unit has finished the boot sequence and you have completed the setup wizard, the main split screen display will appear. Each camera will be labelled CH1 to CH4. A small green square will appear in the cameras that are active. If you have not connected a camera correctly, you will see 'video loss'.

**TIP:** Once you're logged in, double clicking a camera view with LMB will switch to single full screen mode. Double click again to go back to split screen mode



# DVR Operation

## 3.5 Navigating the DVR Menu & Logging in

The way to navigate the DVR menu is by using the mouse. The mouse operates in much the same way as on your computer. Left-click to make selections and choose options. Right-click (RMB) operates as a cancel or previous menu button.

### NOTE:

- This manual assumes the user has connected the mouse to control the DVR unit.
- Any standard wired USB mouse will work with the DVR unit

To enter the main menu, use RMB on the viewing screen and a quick pop up menu will appear. Click on the main menu option and a log in box will appear.

For initial system setup, you will need to access the main menu and login.

### Logging into the main menu

1. Using the mouse, input your user name.  
If this is your first time logging in, then leave user name as 'admin'.
2. Using the mouse, input your password. If this is your first use, leave password blank
3. Press 'Login'

You will now have access to the main menu functions which are outlined in section 6.1

**Main Menu - Setup on page 25**



# DVR Operation

## Setting a password for 'Admin'

For security, it is highly recommended to set a password for the administrator account.

To do this, RMB on the viewing screen and a quick pop up menu will appear click on the main menu option.

1. From the main menu, select 'Setup', then 'Users'
2. Double-click on the 'admin' account to open the 'Change Password' popup. If this is your first time setting a password the old password will be left blank.
3. Using the mouse, input your desired password in the 'New Password' field
4. Input your password again in the 'Confirm Password' field
5. Press 'Ok'. Your new password has now been set

**NOTE:** The 'Admin' account cannot be removed. Please ensure that a secure password is set. Always keep your password safe. If you wish, you may use the space provided below to write your password, then keep this manual in a secure location.

User (Device) Name: \_\_\_\_\_ (Device) Password: \_\_\_\_\_

# DVR Operation

## 3.6 Quick Pop-up Menu

Right-clicking the mouse whilst on the viewing screen will show the pop-up menu for quick access to basic functions.

1. **Single** – Switch to single camera view mode. Select the camera you want to view
2. **Multi** – Switch to split screen mode

**Tip:** Alternatively, use the mouse and double click with LMB on the image to switch between the two modes

3. **PTZ** - Access PTZ (Pan Tilt Zoom) controls via shortcut. Must have PTZ camera (not included) installed and connected
4. **Start/Stop Scan** – This will show each camera in single view and at selected intervals switch between each camera automatically
5. **Colour** – Adjust the colour settings of the selected camera
6. **E-Zoom** - Select an area on the camera screen to get a close up view. You can also select the size in which you want to zoom to by selecting the numbers in the bottom right corner of the screen. Right-click to return to full screen mode
7. **Snap** – Take a photo from the selected camera (A camera icon will show up indicating a photo has been taken). To access photos, see section **6.2 Main Menu - Search** on **page 34**
8. **Start/Stop Record** – Start and Stop 24/7 recording all cameras (default settings). In the bottom left corner of each camera view, you will notice a green box, this means the cameras are recording. If there is no green box they are not recording.

**NOTE:** If footage is captured by motion detection (see section **6.1.4 Schedule** on **page 28**), a yellow square and 'MD' will appear instead

9. **Playback** – Enter playback mode to view recently recorded footage
10. **Main Menu** – Access the main menu to configure DVR settings



Once you have set your username and password, your Home Security System is fully setup. To setup and view your cameras on mobile see section **4.1 Use Apple or Android mobile to access footage** on **page 17** or for PC see section **5.1 Cocoon HD Software for PC Use** on **page 21**



# Mobile Phone Setup

## 4.1 Use Apple or Android mobile to access footage

Footage can be viewed on your mobile using the 'Cocoon HD' iOS and Android compatible application. Before setting up the application, ensure your DVR is connected to the internet using the supplied ethernet cable. The DVR must have a constant, smooth and stable internet connection via your modem to work. To connect:

- Ensure an ethernet cable is plugged into the back of the DVR in the 'RJ45' port.
- To check your network settings (i.e. is your DVR connected to the internet), go to Main Menu → Setup → Network → then press the "Test" button. If a message on the on the left hand side says "ok" your DVR is connected to the internet

## 4.2 Download the Cocoon HD DVR App on your Mobile

1. On the DVR main menu, press 'Information', then 'System' - here you will find the device ID and QR codes

**iOS:** Using a QR code reader, scan the iOS QR code to download the app 'Cocoon HD'.

Alternatively search and download the "Cocoon HD" app in the iOS Appstore

**Android:** Using a QR code reader, scan the Android QR code. Alternatively search and download the Cocoon HD app in the Google Play Store.

2. Click on the app icon to launch the app



iOS



Android

# Mobile Phone Setup

## 4.3 Logging into or creating a Cocoon HD DVR Account

1. If you don't have a Cocoon HD DVR Account, use the 'Register' button and input the required fields to create one

### NOTE:

- Your DVR's username and password cannot be used to log into the app. If you have never used the app, you will need to create a new username and password on the app.
  - The DVR User Account and the Cocoon HD App Account are separate accounts and must use different usernames.
2. Follow the prompts for setup
  3. Enter validation code and email address
  4. Create a password. Enter twice to make sure they match and hit "register"
  5. Enter your User ID and Password into their respective fields.
  6. Press the Login button to login

Please write down your Cocoon DVR app password

User (Device) Name: \_\_\_\_\_ (Device) Password: \_\_\_\_\_

## 4.4 Adding your DVR device to the App

Enabling your DVR footage to be watched and recorded on your smartphone is simple via the app.

1. Within the DVR Main Menu, navigate to Information → System. You will notice a 'Device ID' QR code on the bottom right hand side. Keep this menu option open and complete the below instructions.
2. On the Cocoon HD App select the + symbol in the top-right hand corner to add the Cocoon HD security system as your device. From there you will be within the add device sub-menu
3. Select type of device you wish to add. In this case it will be "DVR"
4. Pair your device using one of two methods:
  - a. **Scan QR Code Device ID**  
On the App, click on the QR scan button next to the words 'Enter Device ID'. Your camera should pop up which will allow you scan your DVR's unique QR code found on the DVR's main MENU as mentioned above in point 1. Point your smartphone camera at the QR code in the bottom right hand corner with the heading "Device ID". It will scan and add your device automatically.
  - b. **Manual type the Device ID**  
Type the Device ID (as noted above in point 1) into your Cocoon HD app under 'Enter Device ID'



# Mobile Phone Setup

5. Enter your DVR device name password from section **3.5 Navigating the DVR Menu & Logging in** on **page 14**.
6. Once done, click the tick symbol in the right-hand corner of the APP to complete the pairing process. The registration and pairing process may take several minutes to register.

**NOTE:** Step by step prompts are located within the app to help you through this process.

Once paired, return to your app and return to the 'My Device' menu.

## 4.5 Navigating the App menus

**Device** - This screen shows you basic information about your device and allows you to access footage

**Message** - Receive and view messages from with your APP

**Media** - View photos on videos from the APP you have manually recorded and saved into the APP on your Smartphone

**Me** - Update details such as app password and logout of the APP. You can also allow access to other users. To do this:

1. Click in the top right-hand corner of the 'Me' menu
2. Enter the login account of other user(s) you wish to grant access to view your footage. They must be a registered user of the Cocoon HD app. To register, they must follow the registration process outlined in section **4.3 Logging into or creating a Cocoon HD DVR Account** on **page 18**

## 4.6 Viewing your DVR footage

1. On the 'Device' menu, click into the orange box at the top of the screen to select the cameras you would like shown on your mobile.
2. By tapping the plus button on one of the blank cameras screen a channel menu will appear allowing you to select the cameras you would like to view on your mobile.
3. Once selected hit 'save'.
4. If paired correctly you will be able to see footage of your camera on your app and a green "Live" symbol in the left-hand corner will inform you that you are viewing livestreamed pictures of your cameras
5. For full screen views of each individual camera, tap on the desired camera. In this mode you can also record stills or video onto your phone

# Mobile Phone Setup

6. Hit the return button in the top left-hand corner, when you wish to return to view footage for all cameras

## 4.7 Take Screenshots (Photos) or Video

1. Click into an individual camera ensuring that footage is streaming
2. To take a screenshot (photo), tap on the “Screenshot” icon
3. To take a video, click the “Video” icon. To stop recording tap the video icon again.

**NOTE:** Your cameras will continue to capture footage and record to your DVR

4. Videos/Photos will be saved in the media menu of the Cocoon HD App. To access the media menu, select back arrow in the top left corner to arrive back to “My Device” page and then click the “Media” menu at the bottom of the App screen.
5. At the top of the “Media” menu, select between photos and videos
6. For iOS devices, to save photos/videos, click the “Manage” button in the top right corner. Select the photos or videos you want to save to your mobile’s photo gallery and hit “Store to photo album”. Follow the prompts to finalise saving the photos/videos.
7. A folder called “Cocoon HD” will be automatically created in your albums folder where you can view the photos/videos

## 4.8 View Footage from DVR’s Recorded Events.

You can stream recent footage captured and recorded on your DVR’s hard disk drive to your phone app. To do this click on one of the four cameras and click the ‘Playback’ icon.

Past events which remain recorded on your DVR according to your settings are revealed in date order from most recent to oldest.

**IMPORTANT:** there is limited space on your DVR’s HDD; new footage records over old footage depending on your settings. Unless saved, protected or archived, footage will be overwritten on your DVR’s HDD.

# PC Setup

## 5.1 Cocoon HD Software for PC Use

The DVR is compatible with Cocoon HD for Windows PC Software. It allows you to connect and view your DVR with a Windows PC (Running Windows XP, Windows 7, Windows 8 and Windows 10). Adding your DVR is simple with P2P connectivity.

1. Plug one end of the Ethernet cable into the back of the DVR into the 'RJ45' Port
2. Plug the other end of the Ethernet cable into your network router's LAN Ports

### 5.1.1 Installing Cocoon HD for PC

1. Download Cocoon HD and install from [www.cocoonproducts.com.au/4chdvr](http://www.cocoonproducts.com.au/4chdvr)
2. Once downloaded, follow the prompts to install the Cocoon HD PC Software
  - a. Follow the on-screen instructions
  - b. Once successfully installed, launch the Cocoon HD program

## 5.2 Logging into Cocoon HD for PC

If you have already installed the Cocoon HD App for iOS or Android on your phone and registered an account, the same account can be used for Cocoon HD software for your PC (see section **4.3 Logging into or creating a Cocoon HD DVR Account** on **page 18**).

1. If you don't have a Cocoon HD Account, use the 'Register' button and input the required fields to create a new username and password

**NOTE:** The Cocoon HD Account cannot use the same username as your DVR user account. They are separate accounts.

2. Enter your user ID and password into their respective fields.

**NOTE:** To remember your password for quick access, press the tick icon

3. Press the login button to login

# PC Setup

## 5.3 Adding your DVR to the Cocoon HD for PC Software

If you have already added your DVR with the Cocoon HD APP for iOS or Android, then your DVR will also be shown on the software Cocoon HD for PC, and you will not be required to add it again.

If you have not completed the above you will need to pair to your DVR to your PC by following the steps below:

1. Make sure your PC and the Main DVR are connected to the Internet with a stable strong connection
2. Click on "Device Management" at the top left side menu of the screen
3. In the Device list box, right click and select 'Add Area', give this area a name and a description. Next right click the area name and select add a device (E.g. your DVR). Choose an Alias for your DVR (e.g. 'Office' or 'Home')
4. Click "device" and enter your settings for your DVR.
5. Enter the following details to add your device:
  - **Device type** - Choose "DVR"
  - **Device name** - This can be any name
  - **Device ID** - As per section **4.4 Adding your DVR device to the App** on **page 18**, this is found in your DVR. Navigate your DVR to Main Menu → Information → System. You will see a Device ID Code on the screen. Enter this Alphanumeric Code
  - **Username** - set as 'admin'
  - **Password** - same as your DVR (default is left blank unless changed)
  - **Channel** - select the number of cameras you wish to view remotely. To view footage for all 4 cameras, type "4"
  - **Description** - add description of the device
6. Click ok, and your DVR should now appear on your Device List.

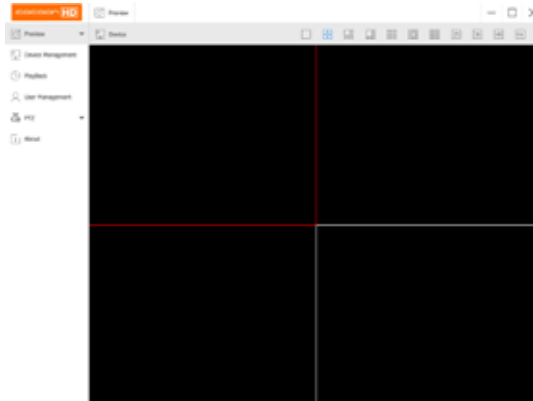
## 5.4 Watching Footage on Cocoon HD for PC Software

1. Click preview in your device list by clicking on the downward arrow
2. Select your DVR device by double clicking on the arrow on the left hand side
3. Each of the four camera channels should now appear.
4. To play or stop one of the cameras simply right click on one of the cameras and select 'Play' or 'Stop'. To play or stop all of the cameras at once, right click on any of the cameras and select "Play All" or "Stop All"

# PC Setup

5. Wait for the DVR to synchronize over the internet and to start streaming footage to the Cocoon HD For PC software. Once correctly paired the colour of the icon next to each camera will turn green. This may take several minutes.
6. You should be able to see the camera footage stream from all 4 cameras within the Cocoon HD for PC software.

## 5.5 PC Menu Overview



- **Preview** – Allows you to preview footage of your cameras as per section **5.4 Watching Footage on Cocoon HD for PC Software on page 22**
- **Device Management** – Lists all DVR's loaded to the PC and allows you edit device details
- **Playback** – Play back footage from your chosen camera(s) by selecting the date and time period
- **User management** – Setup a user account in the PC software (this is not mandatory)
- **PTZ** - This DVR unit is compatible with PTZ (Pan, Tilt & Zoom) cameras (not included). Access this page to configure the PTZ camera settings. Please note that the PTZ device can be activated only when a channel in connection with the PTZ camera is selected. Consult the manual of your PTZ camera for correct settings.
- **About** - Displays information about the Cocoon HD software

# PC Setup

## 5.6 Taking a Screenshot with Cocoon HD for PC

1. While viewing the camera feed, highlight a channel by clicking on it. The channel will have a red box surrounding it
2. Right click the channel and select "Take a snapshot"
3. A folder (titled 'Cocoon HD') will be automatically generated on your desktop with the photo(s) saved into the folder

## 5.7 Taking a Video with Cocoon HD for PCs

1. While viewing the camera feed, highlight a channel by clicking on it. The channel will have a red box surrounding it.
2. Right click the channel and click "Start Record". Click stop record when ready
3. A folder (titled 'Cocoon HD') will be automatically generated on your desktop with the video(s) saved into the folder

Visit [www.winplus.com.au](http://www.winplus.com.au) for additional tips and support with setting up your mobile or PC applications.



# Advanced Settings

This section gives you a better understanding of all the menu options available on your DVR unit. Tailor these settings to your requirements.

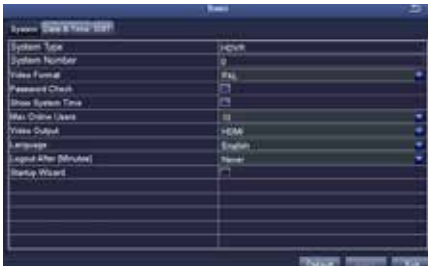
## 6.1 Main Menu - Setup

The Setup menu provides access to features relating to setting up your DVR in order to get the desired performance. There are multiple sub-menus within setup.

**IMPORTANT NOTE:** Always click 'Apply' after making any changes within the menu system. If you do not click 'Apply', your changes will not be saved

### 6.1.1 Basic

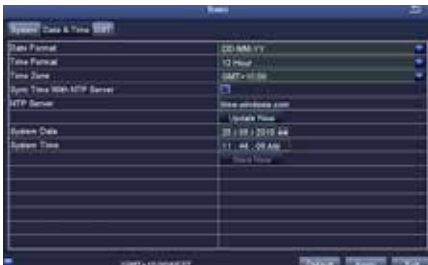
Here you will find the basic settings on your DVR.



#### System tab

Set the default system settings by selecting an option on the right-hand side of the menu.

- **Max Online Users:** Limit the amount of simultaneous viewers of the DVR
- **Video Output:** Change your default output from 1024x768 to match your display



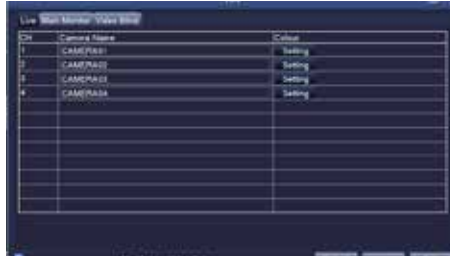
#### Date & Time tab

Ensure your recordings are capturing the correct date and time. Change the current date and time by clicking on the date and time boxes and following the on-screen prompts.

**IMPORTANT NOTE:** Always click 'Apply' after making any changes in the menu. If you do not click 'Apply', your changes will not be saved. Changing some settings will also require a system reboot.

# Advanced Settings

## 6.1.2 Live



### Live tab

- **Camera Name:** Label the selected camera (up to 32 characters). Defaults names are Camera 1,2, 3 & 4. Rename to your preferred.
- **Colour:** Click on 'Setting' to adjust Brightness, Hue, Saturation, Contrast, and Sharpness settings for each camera

### Main Monitor tab

- **Display Mode:** Select between 1x1 or 2x2 view NOTE: If 1x1 is used, Start/Stop Scan can be used on the viewing screen to automatically change between cameras.
- **Interval[S]:** Select the interval that Start/Stop Scan should use
- **Previous/Next Group:** If 1x1 display mode is used, cameras can be re-ordered for when Start/Stop Scan is used

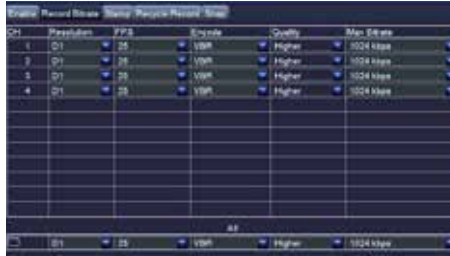
### Video Masking tab

- **Mask Area Setting:** Mask areas of the camera that you don't want recorded. Useful for hiding personal information from recordings. To activate, select 'Setting', then use the mouse to draw a rectangle over the area you want 'masked'. To remove the masks, select 'Default' from the Live menu.
- **Default:** Reset the displayed settings to factory defaults
- **Apply:** After all changes are made, click the 'Apply' button to save
- **Exit:** If you want to cancel after making any changes, click 'Exit' to exit the menu without changes

**IMPORTANT NOTE:** Always click 'Apply' after making any changes within the menu system. If you do not click 'Apply', your changes will not be saved

# Advanced Settings

## 6.1.3 Record



### Enable tab

Enable or disable recording function for each camera

### Record Bitrate tab

Allows you to adjust the recording stream for all four cameras

- Resolution: Supports 720p
- FPS (Frames per Second): Choose from 1 to 25
- Maximum global framerates across 4 channels is 100fps
- Encode: Supports VBR (Variable Bit Rate) and CBR (Constant Bit Rate)
- Quality: Depending on camera
- Max Bitrate: Higher bit rates use more hard drive space
- Adjust (resolution): Depending on camera

### Stamp tab

- **Camera Name:** Toggle the display of the camera name for each channel
- **Time Stamp:** Toggle the display of the time stamp for each channel
- **Position:** Use the mouse to drag the camera name and time stamp to any position on the live image. Right-click mouse to exit back to 'Record' page

### Recycle Record tab

**If ticked:** When the hard drive is full, the DVR will automatically overwrite the earliest recorded files and continue recording

**If unticked:** When the hard drive is full, a warning message 'The remaining space is insufficient' will display and the DVR will stop recording

### Snap tab

Display snapshot settings.

# Advanced Settings

## 6.1.4 Schedule



Allows manual record and motion record times to be scheduled to set an active record time, follow these steps:

1. Select 'Schedule' for manual recording or 'Motion' for motion recording schedule settings
2. Double-click an area on the graph where you would like to schedule recording
3. Ensure that the correct day is shown on the top left corner
4. Select 'Add', then use the dropdown menu to set a start and end time
5. Once set, press the tick button to add the time to the schedule
6. To copy the schedule between days, use the dropdown menu at the top right corner to select a day, then press 'Copy'
7. Press 'Ok' when complete
8. To copy the schedule between cameras, use the dropdown menu at the bottom of the schedule screen to select a camera, then select 'Copy'
9. To save settings, press 'Apply'

### NOTE:

- Time selected will be highlighted in blue blocks
- As default, the DVR is scheduled for 24/7 motion recording, but no scheduled manual recordings

### PIR tab

Passive infrared sensors can physically detect motion and activate recording.

**NOTE:** PIR sensors are not included.

# Advanced Settings

## 6.1.5 Alarm



### Motion

- **Enable:** Toggle which camera's alarm sensor is on or off
- **Holding Time[s]:** Select the duration that an alarm signal should be shown if triggered
- **Trigger:** Allows 'show full screen', 'email' and 'snap' settings to be set. Please note, this model doesn't support 'To Alarm Out'.
- **Area:** In this interface, blue grid boxes indicate areas that are monitored for movement. Hold on to LMB and drag mouse across screen to adjust selection

**NOTE:** Removing blue grid boxes disables the area monitored for movement. This is handy for camera facing main roads with cars driving past when monitoring your monitoring your front porch.

Right-click for pop up bar to adjust motion sensitivity, resetting grid to default and saving settings

IMPORTANT THE DVR CANNOT DIFFERENTIATE BETWEEN DIFFERENT TYPES OF MOVEMENT.

E.G. Human walking, Driving car, tree swaying etc.

**NOTE:** Sensitivity 1 is the most sensitive, with 8 being the least sensitive

### Schedule tab

Linked to 'Motion Record' from the Schedule submenu. See section **6.1.4 Schedule** on **page 28** for details about configuring the motion record schedule

### Video Loss

Configure how video loss is handled by the DVR

### PIR

Passive infrared sensors can physically detect motion and activate recording.

**NOTE:** PIR sensors are not included.

### Other Alarm

Configure how other events are handled by the DVR

# Advanced Settings

## 6.1.6 Network

### Network tab

Configure your network settings here.

- **HTTP Port:** Default value is 80
- **Server Port:** Default value is 5000
- **Mobile Port:** Default value is 5001
- **Obtain an IP Address Automatically:** To obtain the IP function automatically (We recommend leaving this box ticked)
- **IP Address:** To set the IP address of the device
- **Subnet Mask:** To set the subnet mask of the device
- **Gateway:** To set the default gateway of the DVR
- **Preferred DNS Server:** This address is provided by your network operator and must be filled in when using mobile monitoring
- **Alternate DNS Server:** This address is provided by your network operator
- **PPPOE:** When enabled, the DVR will automatically establish a network connection in the form of PPPOE, then the IP address can be seen through Main Menu → View Information → Network Status
- **Username:** For PPPOE mode, enter the ISP (Internet Service Provider)
- **Password:** For PPPOE mode, set password
- **Test:** Check whether the entered IP address and PPPOE information are valid or not

### Sub-Stream tab

Defines which channels are displayed over the web along with frame rates and bitrates.

- **Resolution:** Supports CIF only
- **FPS:** Set framerate to send over the network, frame rates depend on the host and local bandwidth
- **Encode:** Supports VBR and CBR
- **Quality:** Select between Higher, Medium, Low, Lower, Lowest
- **Max Bitrate:** Set the maximum bitrate that each channel will transmit

# Advanced Settings

## Email tab

The Cocoon HD Home Security System can email you motion alerts if settings are enabled. Contact your network administrator if you do not have this information. We recommend using a webmail service such as Gmail, Yahoo etc.

- **SMTP Server:** Enter your server details. e.g.: smtp.gmail.com
- **Port:** Enter your SMTP port number
- **SSL Check:** Enable if your server uses SSL
- **Send Address:** Email address notifications sent from
- **Password:** Email Password
- **Receive Address:** Email address the alerts will be send to
- **Test:** Check whether the entered SMTP information is valid or not

## DDNS tab

Some internet providers operate using DDNS or Dynamic DNS IP addresses. As opposed to a fixed Static IP, a DDNS IP is dynamic and constantly changing. This type of IP address is a problem for your DVR unit unless your setup a service to manage this. Fortunately, there are many services available that can do this for you. However, some may ask for a nominal fee for their services.

- **DDNS:** Toggle to enable/disable the DDNS settings
- **DDNS server:** Choose your DDNS provider from the drop-down list
- **Username:** Enter your DDNS provider username
- **Password:** Enter your DDNS provider password
- **Host Domain:** Enter your host name provided by your DDNS provider
- **DDNS Update [Hours]:** Set the frequency that the DVR should check for DDNS updates
- **UPNP:** Toggle to enable/disable UPNP

# Advanced Settings

## 6.1.7 Users

Configure all user settings using the following steps. Your Cocoon Home Security System can limit specific MAC addresses for additional security.

### Adding a new user

1. Press the 'Add' button at the bottom of the User Management sub-menu
2. Set the User Name as desired, then input the desired password
3. Select between Normal and Advanced user type:  
**Normal:** Allows remote login and local log in to view cameras  
**Advanced:** Allows full access to view cameras, search logs, file management, except for being able to shut down the DVR  
For more specific settings, such as being able to shut down the DVR, select the 'Authority' tab and configure access control for each camera and feature
4. **Optional:** Bind the user to a specific MAC address by enabling 'Binding PC MAC Address' and entering the MAC address below
5. **Authority:** User specific authority settings
6. Press 'OK' to add new user

### Deleting a user

Whilst logged into your DVR's admin account, highlight an existing user by clicking on the user with the mouse. Press the 'Delete' button and then press 'OK' to confirm.

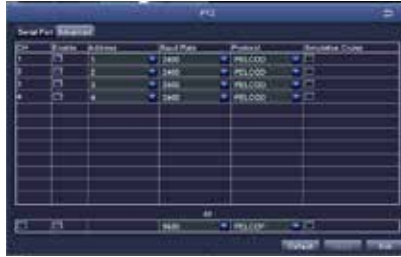
### Changing a user's password

Whilst logged into the user's account, highlight an existing user by clicking on the user with the mouse. Press the 'Change Password' button and enter the old password, as well as your new password. Press 'OK' to confirm.



# Advanced Settings

## 6.1.8 PTZ



This DVR unit is compatible with PTZ (Pan, Tilt & Zoom) cameras (not included). Access this page to configure the PTZ camera settings. Please note that the PTZ device can be activated only when a channel in connection with the PTZ camera is selected. Consult the manual of your PTZ camera for correct settings.

### Serial Port tab

- **Address:** Select channel of the PTZ camera
- **Baud Rate:** Select the baud rate which the PTZ camera operates. Please check the PTZ camera specs or manual for this information
- **Protocol:** Select the required protocol for the PTZ camera
- **Simulative Cruise:** Also known as patrol mode. Select to enable/disable this feature

### Advanced tab

Configure pre-set camera orientations, cruise lines and track settings.

- **Preset:** Press the 'Setting' button to set a position for the PTZ camera. Adjust the PTZ location to your desired position, then press the Save button to confirm.

**NOTE:** A maximum of 128 orientations can be pre-set

- **Cruise:** Press the 'Add' button to add cruise lines to a camera.

**NOTE:** A maximum of 8 cruise lines can be added

- **Track:** Set a movement track (to control the pan, tilt and zoom for PTZ Cameras)

# Advanced Settings

## 6.1.9 Advanced

**Reset:** Reset all settings to factory default.

**NOTE:** *time and language will not be reset.*

**Import/Export:** Export the parameters of your device onto a removable storage device.

1. Insert a USB flash drive up to 32GB into the rear of the DVR
2. Select the 'Import' or 'Export' button to import or export your DVR settings

## 6.2 Main Menu - Search

To access the 'Search' settings, select 'Search' from the Main Menu. Choose the tabs at the top to switch between sub-menus. The 'Search' menu provides access to playback recordings and backup to flash drive.

**NOTE:** *The DVR may take some time to retrieve all your recordings*

### Time Search tab

Search for footage recorded on a given day.

1. On the right-hand side, select the date to search, then press 'Search'
2. Light blue bars indicate found recordings. Using the mouse, select a start time on the display, or enter known time and date to view specific times.
3. Press the play button to commence playback from the DVR to your monitor

### Event Search tab

Search for motion events that the DVR has detected.

1. On the right-hand side, select the date to search, then press 'Search'
2. A list of detected motion recordings will be shown. Double-click on an entry to commence playback from the DVR to your monitor

### Image tab

Search for images captured on the DVR.

1. On the right-hand side, enter the start and end times to search, then press 'Search'
2. A list of image files will be shown. Double-click on a file to view

# Advanced Settings

## 6.3 Main Menu - Backup

Backup allows you to transfer recordings to a USB flash drive up to 32GB formatted to FAT32.

1. Insert a USB flash drive into the rear of the DVR unit
2. On the right-hand side, enter the start and end times to search, then press 'Search'
3. A list of footage files that have been recorded by the DVR will be shown. Select your desired files for export by ticking the file
4. Once selected, press the 'Backup' button, then press 'Start'
5. Wait until the backup is complete before exiting and removing the USB flash drive

**NOTE:** If the USB has insufficient space for transfer, select 'Disk Cleanup'. Files can now be highlight and deleted using the 'Delete' button

## 6.4 Main Menu - Information

### 6.4.1 System

Displays system information of the DVR. If you are wanting to setup the DVR to be viewed on a smartphone, three QR codes allow easy set up for mobile monitoring. For more information, refer to section **Mobile Phone Setup** on **page 19**

### 6.4.2 Event

Search for motion and video loss logs that have occurred on the DVR.

1. On the right-hand side, select the date to search, then press 'Search'
2. A list of log files will be shown.

### 6.4.3 Log

Search for operational logs that have occurred on the DVR.

1. On the right-hand side, select the date to search, then press 'Search'
2. A list of log files will be shown. Double-click on an entry for more information

**NOTE:** A log file can be exported to a USB flash drive using the 'Export' button

### 6.4.4 Network

Displays a list of your DVR's current network settings. This is useful to confirm which IP address your DVR has been assigned.

# Advanced Settings

## 6.4.5 Online Users

Displays a list of current users viewing the DVR.

Press the 'Refresh' button to update the generated list of viewers.

## 6.5 Main Menu - Disk Management

Check the free space available on your 500GB internal HDD.

You can also check space available on an inserted USB flash drive.

## 6.6 Main Menu - Logoff

To change between users, select the 'Logoff' button, then press 'OK' to confirm.

## 6.7 Main Menu - Shutdown

To safely shut down the DVR, select the 'Shut down' button, then press 'OK' to confirm.

# Disposal of Packaging

This product has been packaged to protect it against transportation damage. Unpack the appliance and keep the original packaging carton and materials in a safe place. It will help prevent any damage if the product needs to be transported in the future, and you can use it to store the appliance when it is not in use.

In the event, it is to be disposed of, please recycle all packaging material where possible. Wrapping can be a suffocation hazard for babies and young children, so ensure all packaging materials are out of their reach and disposed of safely. Observe any local regulations regarding the disposal of packaging and dispose of it appropriately for recycling. Contact your local authorities for advice on recycling facilities in your area.

# Disposal of Product

Observe any local regulations regarding the disposal of waste products. Contact your local authorities for advice on recycling facilities in your area.

At the end of its working life, do not throw this product out with your household rubbish. Electrical and electronic products contain substances that can have a detrimental effect on the environment and human health if disposed of inappropriately. Observe any local regulations regarding the disposal of electrical consumer goods and dispose of it appropriately for recycling. Contact your local authorities for advice on recycling facilities in your area.

# FAQs

Question	Solution
I have no picture	<ul style="list-style-type: none"> <li>• Check that power is on and the Power LED is lit up</li> <li>• Check the HDMI cable is connected properly in both the DVR unit and your television</li> <li>• Set the TV or monitor to the correct video input channel. On most TV's, you can change inputs by pressing the button labelled source, input, A/V, channel 0 etc.</li> <li>• Do not use a laptop unless it has an HDMI input</li> </ul>
I have no power	Make sure the power adaptor is connected to the back of the DVR and the other end is plugged into a socket that is turned on
Why are some camera images discoloured?	Your cameras are equipped with a night vision filter to help them see at night. This can make some colours appear discoloured. Try adjusting the colour settings in the display menu
My night vision image is very dark or just a black screen	The cameras will work to about 24m in the dark. If you are getting a dark image, the camera may be aimed at a target further than 24m away. Try aiming it closer or down towards the ground to make sure they are working
My night vision image is very bright and I can't see anything when aimed out a window	The infrared light is bouncing off the window and reflecting back into the camera. Either place the camera on the other side of the window or make sure the camera face is flush with the glass surface
Motion Detection settings keep recording all night long	Night vision uses infrared light to 'see' an image at night. It relies on small amounts of ambient light to function correctly. The less light there is, the harder it is for the camera to see an image. This can result in artefacts in the image. If there are too many artefacts and motion recording keeps triggering, try adjusting the sensitivity settings in the 'Alarm Area Menu' to a lower value. See notes in section <b>6.1.5 Alarm</b> on <b>page 29</b>
Where do I place my cameras?	Camera placement depends on your application. For homes, suggested camera placements are near doorways, under eaves looking down the driveway, in backyards or in a child's room. For small businesses, high traffic areas near doorways, over cash registers, or down aisles are suggested
Can I add more cameras?	The Cocoon DVR Unit accepts up to 4 cameras. You can replace any of the cameras with other cameras, however there is no way to add additional channels to the DVR

# FAQs

I have no audio?	The DVR does not support audio recording
What is a PTZ camera?	PTZ or Pan / Tilt / Zoom cameras are generally high-end cameras that allow you to aim the camera where you want and zoom in. The DVR has built-in functions to control the PTZ features when connected to the RS485 Port
My hard drive is full	<ul style="list-style-type: none"> <li>• If your hard drive fills up, you can either format the hard drive or turn on the Overwrite feature. Setting Overwrite to 'Enable' will overwrite the oldest footage first to ensure there is no down time, see section <b>6.1.3 Record</b> on <b>page 27</b>.</li> <li>• Turning motion detection on will only record when motion is detected saving additional hard drive space</li> </ul>
Can I add a bigger hard drive?	Yes, the Cocoon DVR Unit accepts HDD's up to 4TB in size. If you are unfamiliar with hard drives and changing computer components, we strongly suggest you consult a professional. Any damage or modifications to the internal components may void your warranty. Always ensure there is no power to the DVR unit when opening the casing
How long will my DVR record?	Depending on your recording settings, resolution and number of cameras, you can record for up to 180 days on the lowest settings, or approximately 7 days on the highest settings. We recommend setting motion detection to 'enable' to record only when motion is detected. This will allow you to record even longer
We have changed the password but we do not remember what it is	If you have forgotten your password, contact Winplus Technical Support for assistance on 1300 663 907
How can I share security footage with others?	To view the footage on your computer or send an AVI to other parties such as the police, refer to section <b>6.3 Main Menu - Backup</b> on <b>page 35</b>

\*It is recommended you format your HDD every 3-6 months

# Glossary of Terms

## **Camera**

The connectors used by the DVR and cameras are camera connectors. They are quick turn and attach or release connectors

## **CCTV**

CCTV or closed-circuit television uses video cameras to view on a monitor. The DVR can then be used to record the images

## **DVR**

The main unit is a DVR or Digital Video Recorder. It has all of the smarts to detect motion, record, playback and connect to the internet

## **Motion Recording**

The DVR is equipped with motion detection technology. When enabled, if motion occurs in the vision of the camera, the DVR will begin recording

## **Night Vision**


The cameras are equipped with infrared LEDs which emit light the human eye cannot see. This allows vision in low light or “night vision”


## **PTZ Control**

Some higher end cameras are equipped with PTZ or Pan / Tilt / Zoom functionality. When connected to the DVR, the DVR can be used to control the camera



**After Sales Support**

 1300 663 907

 [customercare@winplus.com.au](mailto:customercare@winplus.com.au)

**Model Number** HE180106

# COCOON™

## HOME SECURITY SYSTEM WITH DVR

# Repair and Refurbished Goods or Parts Notice

---

Unfortunately, from time to time, faulty products are manufactured which need to be returned to the Supplier for repair.

Please be aware that if your product is capable of retaining user-generated data (such as files stored on a computer hard drive, telephone numbers stored on a mobile telephone, songs stored on a portable media player, games saved on a games console or files stored on a USB memory stick) during the process of repair, some or all of your stored data may be lost.

**We recommend you save this data elsewhere prior to sending the product for repair.**

You should also be aware that rather than repairing goods, we may replace them with refurbished goods of the same type or use refurbished parts in the repair process.

**Please be assured though, refurbished parts or replacements are only used where they meet ALDI's stringent quality specifications.**

If at any time you feel your repair is being handled unsatisfactorily, you may escalate your complaint. Please telephone us on 1300 663 907 or write to us at:

Winplus Australasia



PO Box 537 Bayswater Business Centre, Victoria, Australia

1300 663 907 - Hours: Mon-Fri 8:30am - 6:00pm AEST

customercare@winplus.com.au

---

AFTER SALES SUPPORT

  1300 663 907

 customercare@winplus.com.au

MODEL: HE180106 PRODUCT CODE: 63131 12/2018





cocoon™