

PRINTING A FILE



Insert the included MicroSD Card into the memory card slot next to the LCD screen with the label facing to the left as shown



Enter the Main Menu and select Print File



Select the file you would like to print
The printer will return to the status screen and display "Heating..." in the upper left corner of the display. The nozzle temperature will heat until it reaches the target temperature
Once the nozzle reaches the target temperature the printer will automatically begin printing the file



Once the print is complete, turn off your 3D Printer and wait for the extruder to cool. After removing the magnetic print mat from the printer base, slowly and gently bend the sides of the mat down to raise the center of the mat and lift the printed object

COCOON[™]
create

MODELMAKER 3D PRINTER GETTING STARTED GUIDE



Ensure you have received all of the items with your 3D Printer:

- | | |
|--------------------------|---------------------------|
| 1 x 3D Printer | 4 x 10m PLA Filament |
| 1 x Filament Spool Stand | 3 x Magnetic Print Mats - |
| 1 x Power Cable | One already on printer |
| 1 x USB Cable | 1 x Metal Base Mat |
| 1 x 4GB MicroSD Card | 1 x Glue Stick |
| 1 x Scraper | 1 x Instruction Manual |
| 1 x PTFE Tube | 1 x Getting Started Guide |
| 1 x Hex Key Set | 1 x Warranty Card |
| 2 x Cable Ties | 1 x Levelling Card |



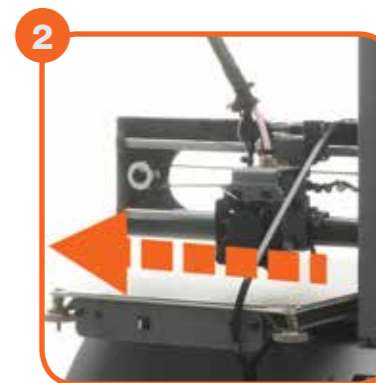
CONSTRUCT AND CONNECT



UNPACK

Carefully remove the 3D printer from the box and place on a clean, level work space.

Package contents are listed above



CUT CABLE TIES

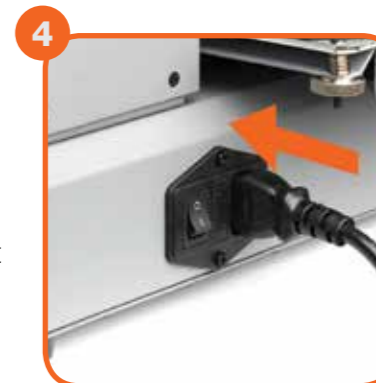
Cut the cable tie holding the print bed to the x-axis frame.



ATTACH SPOOL HOLDER

Unscrew and remove the outer plastic nut from the filament spool holder, then insert the nut into the side slot of the printer tower. Screw in the filament spool holder into the side of the printer.

NOTE: Ensure the filament spool holder is secure and do not overtighten



POWER ON

Ensure the power switch is in the OFF position, then insert the power supply cable into the back of the 3D Printer. Insert the other end into a nearby mains power outlet. Turn on the power outlet, then turn on the power switch at the back of the 3D Printer

ADD FILAMENT



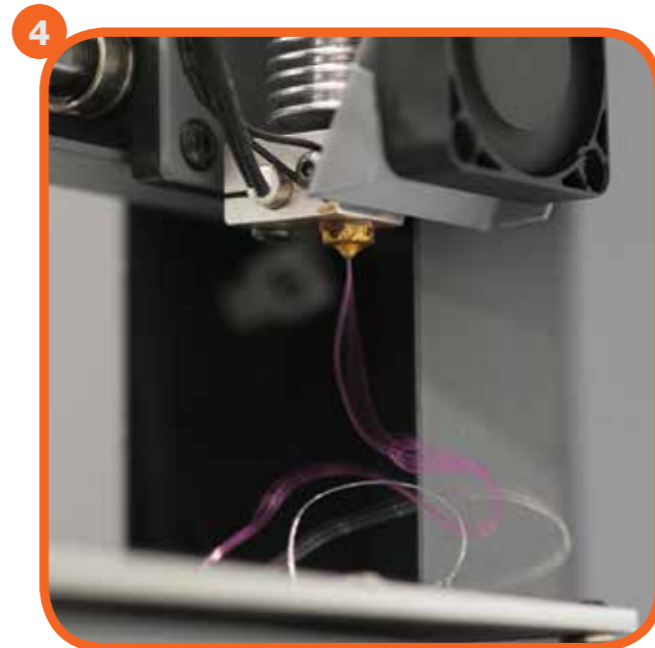
Place your roll of filament on the filament spool holder



Push the dial button to access the Main Menu and navigate to **Quick Settings** → **Change Filament** → **Add Filament**. The extruder will automatically raise and preheat



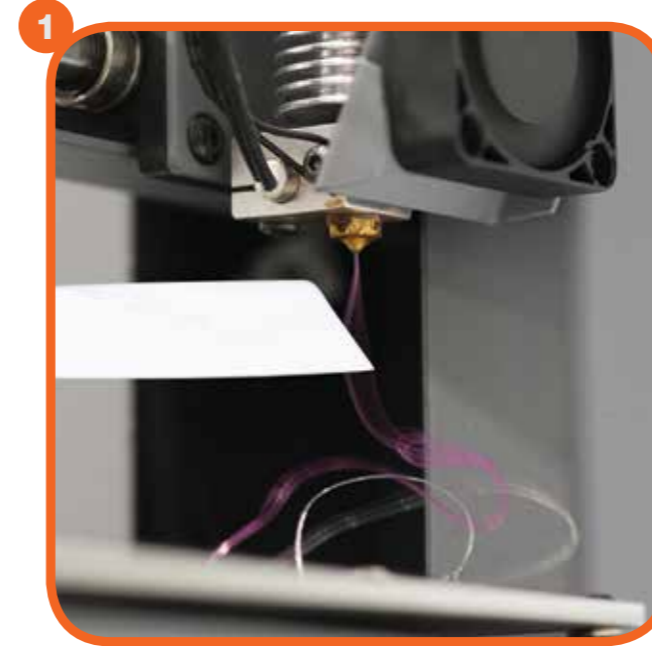
After the extruder has fully preheated, hold the filament clamp on the top of the tower and manually feed the end of the filament through the tube until you feel some resistance. Let go of the clamp so the motor can push the filament through



Once filament is extruding from the nozzle press back to stop extruding

5 Carefully remove any excess filament from the nozzle using the scraper. Filament is loaded and ready to print.

LEVELLING THE PRINT BED



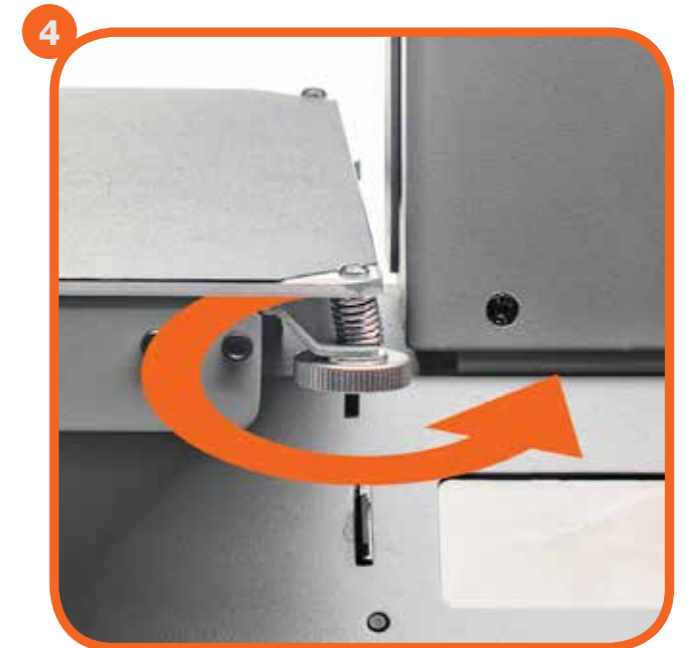
Clean off any excess filament residue from the tip of the nozzle using the scraper



Enter the Main Menu and select Level Bed



After initializing, the level wizard will guide you through levelling all 4 corners of your print bed. Press next to proceed to the next screen / corner



On each corner, turn the corresponding thumbwheel until you can just slide the levelling card or a piece of copy paper between the extruder and print bed with slight friction, about 0.1mm

5 After levelling the last corner you can return to the Main Menu or restart the levelling wizard. If this is your first time levelling the bed, we recommend completing the wizard again to ensure it is level