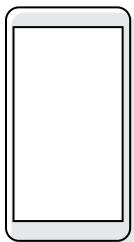
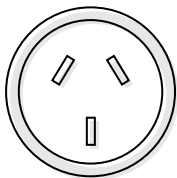


1. BEFORE YOU START

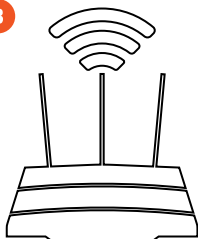
1



2



3



4



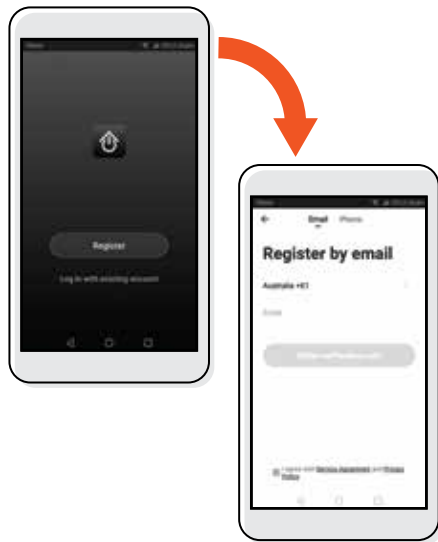
Scan this code
or search for
Cocoon Connect

Before you begin, make sure you have:

1. A mobile device - Android (V4.1 or later) or iOS (V8 or later)
2. A power socket
3. A Wi-Fi connection (have the password handy)
4. Download the Cocoon Connect app

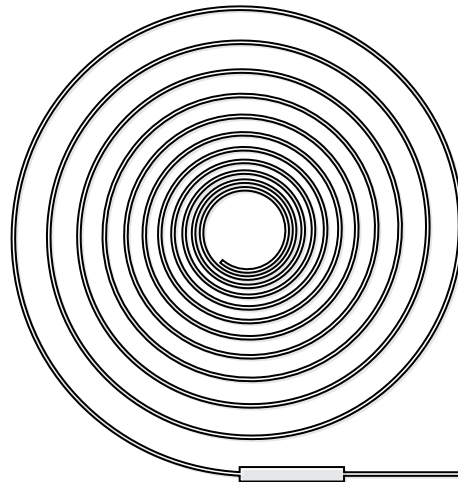
For detailed instructions and videos, visit www.cocoonproducts.com.au

2. APP SETUP



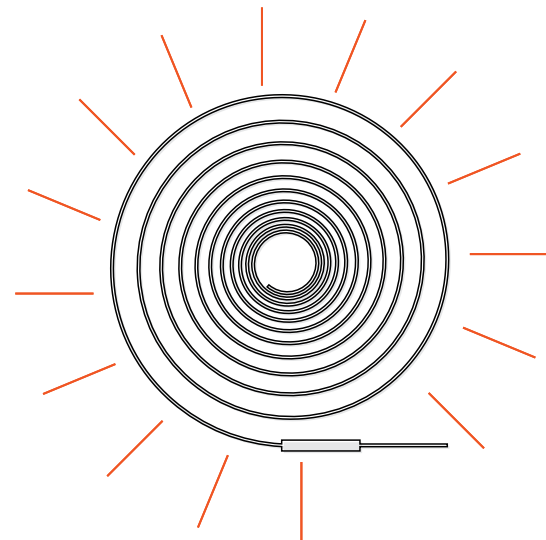
First time users:
Register an account and follow the remaining prompts on screen

3. INSTALL LIGHT STRIP



Plug the Light Strip's adaptor into a power point

4. CONFIRM PAIRING MODE



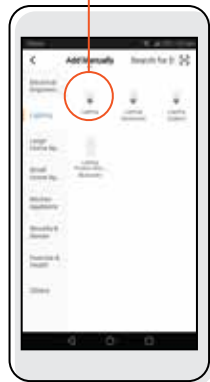
1. The Light Strip will blink rapidly in white to show it's in pairing mode
2. If your Light Strip doesn't blink rapidly, hold the button on the controller for 5 seconds, or refer to your manual

5. ADD THE LIGHT STRIP

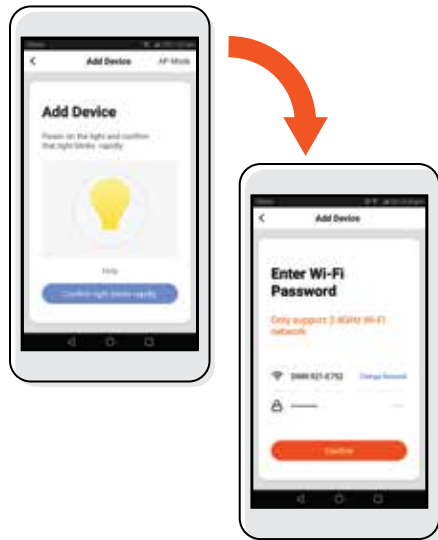


1. ADD NEW DEVICE

2. SELECT LIGHTING (IN LIGHTING)

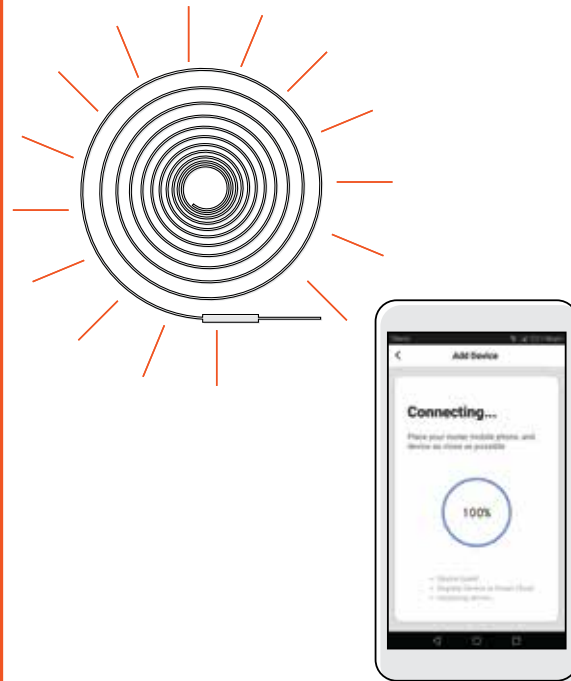


6. CONNECT LIGHT STRIP TO WI-FI



If you have any issues with this step, ensure your Wi-Fi password is correct
If you are still having issues, please check your Instruction Manual

7. LIGHT STRIP ADDED SUCCESSFULLY



Light Strip will initially go solid white to indicate it has been paired successfully

8. CONTROL YOUR LIGHT STRIP



Use, manage and control your Smart Light Strip from the Cocoon Connect app