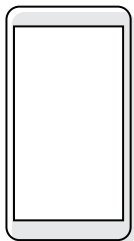
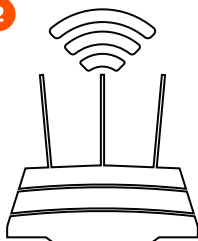


## 1. BEFORE YOU START

1



2



3

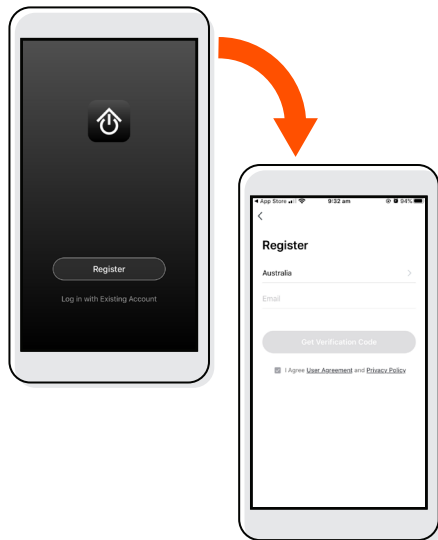


Scan this code  
or search for  
Cocoon Connect

4

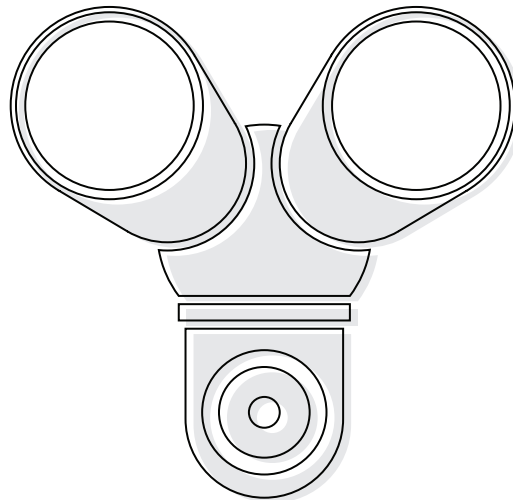


## 2. APP SETUP



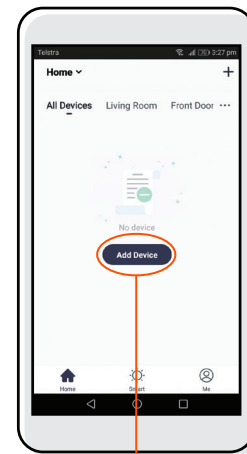
First time users:  
Register an account and follow the remaining prompts on screen

## 3. CONFIRM PAIRING MODE



- LED indicator will be flashing red. You will hear an audible sound, this means your device is ready to pair
- If you have issues with this step, hold down the internal reset button for 5 seconds and start again
- If you are still having issues, please check your instruction manual

## 4. ADD THE CAMERA

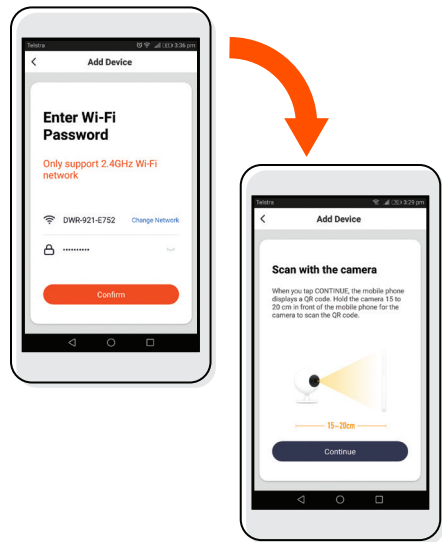


1. ADD NEW DEVICE

2. SELECT  
FLOODLIGHT  
CAMERA

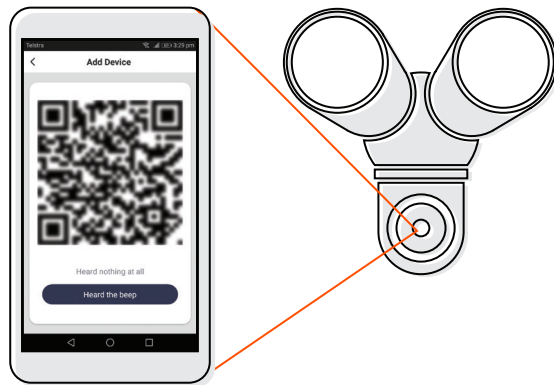


## 5. CONNECT CAMERA TO WIFI



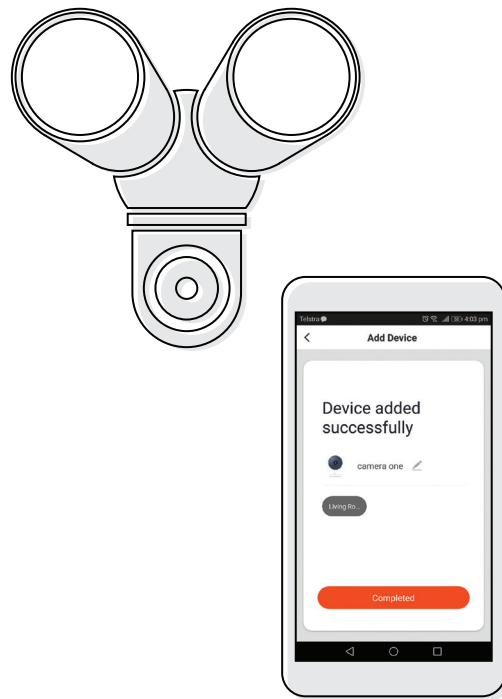
If you have any issues with this step, ensure your password is correct  
If you are still having issues, please check your Instruction Manual

## 6. SCAN QR CODE WITH CAMERA

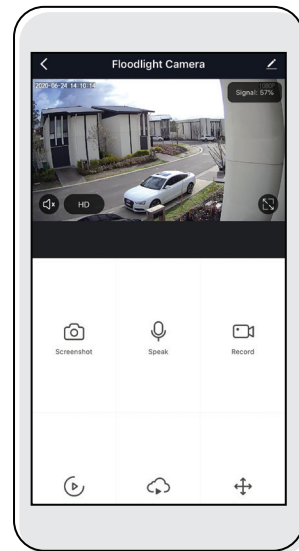


1. Hold the mobile phone 15 to 20cm in front of the Pan & Tilt Camera for the camera to scan the QR code
2. Camera will beep when the code is scanned
3. Press 'Heard the Beep'

## 7. CAMERA ADDED SUCCESSFULLY



## 8. CONTROL YOUR FLOODLIGHT CAMERA



Use, manage and control your Smart Floodlight Camera from the Cocoon Connect app