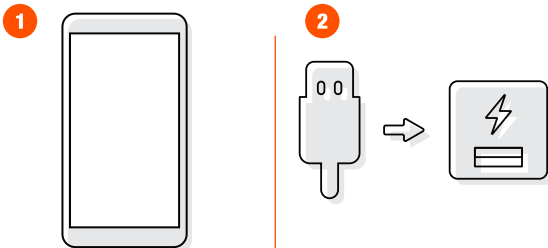


1. BEFORE YOU START

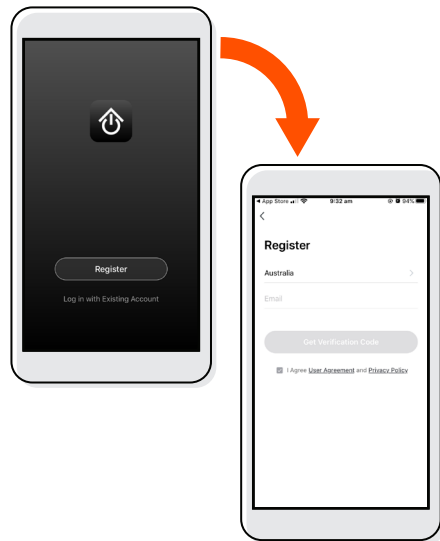


Before you begin, make sure you have:

1. A mobile device - Android (V4.1 or later) or iOS (V8 or later)
2. USB Power going to the Pan & Tilt Camera
3. A Wi-Fi connection (have the password handy)
4. Download the Cocoon Connect app

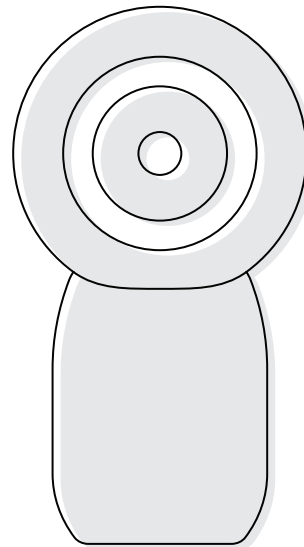
For detailed instructions and videos, visit www.cocoonproducts.com.au

2. APP SETUP



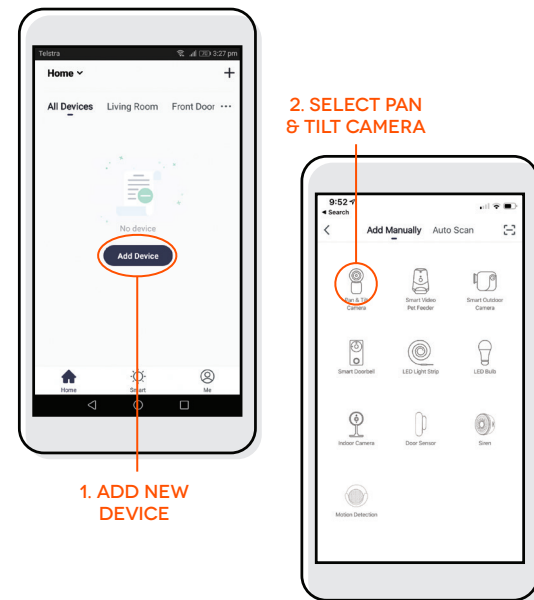
First time users:
Register an account and follow the remaining prompts on screen

3. CONFIRM PAIRING MODE

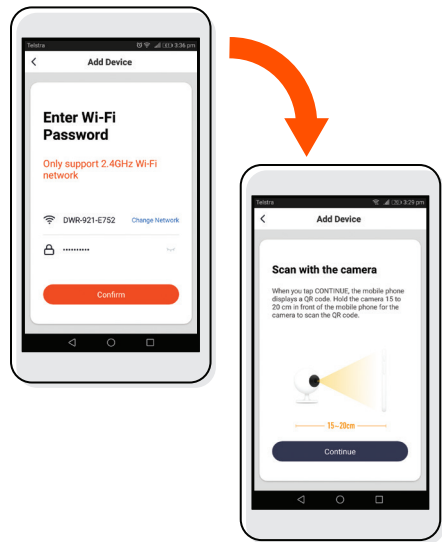


- The camera will beep twice and continue to beep when in pairing mode
- If you are having issues please refer to your manual

4. ADD THE CAMERA

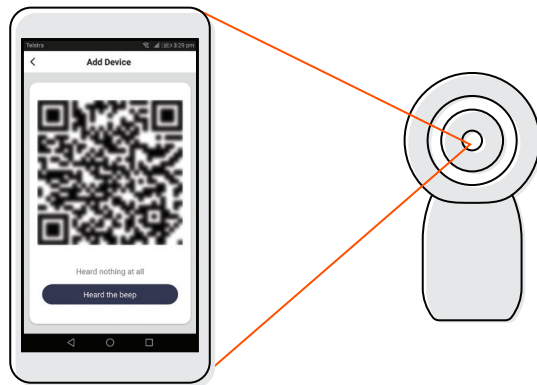


5. CONNECT CAMERA TO WIFI



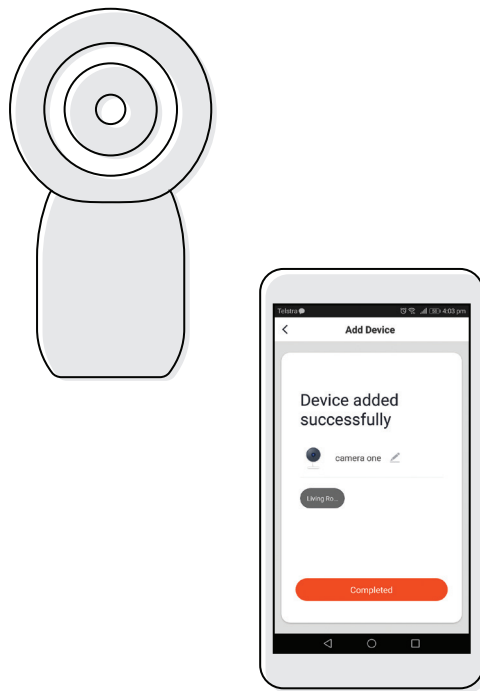
If you have any issues with this step, ensure your password is correct
If you are still having issues, please check your Instruction Manual

6. SCAN QR CODE WITH CAMERA

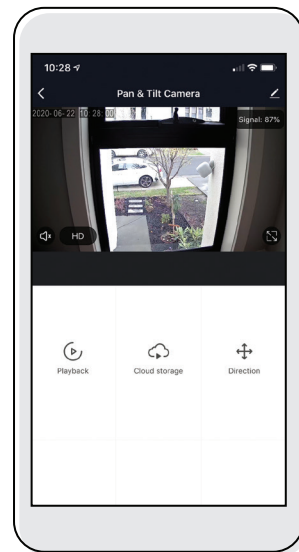


1. Hold the mobile phone 15 to 20cm in front of the Pan & Tilt Camera for the camera to scan the QR code
2. Camera will beep when the code is scanned
3. Press 'Heard the Beep'

7. CAMERA ADDED SUCCESSFULLY



8. CONTROL YOUR PAN & TILT CAMERA



Use, manage and control your Smart Pan & Tilt Camera from the Cocoon Connect app