



**8 CAMERA HOME SECURITY SYSTEM**  
**WITH DVR**



**Model Number: HE160233**  
**INSTRUCTION MANUAL**





# Important

## Getting the most out of your 8 Camera Home Security System with DVR:



### Read the manual

It will help you get set up with ease



### Visit [www.winplus.com.au](http://www.winplus.com.au)

We've got additional support videos and guides



### Call After Sales Support - 1300 663 907

Or email [customercare@winplus.com.au](mailto:customercare@winplus.com.au) - we're always happy to help

# Warranty Note

If you experience any issues with this product, or it's performance is not what you had expected, please contact us at Winplus before returning the item to the store.

It is likely that we can resolve any problems for you via phone or email.

We can be reached on:

Phone: 1300 663 907 (Mon - Fri; 8:30am - 6:00pm EST)

Email: [customercare@winplus.com.au](mailto:customercare@winplus.com.au)

Web: [www.winplus.com.au](http://www.winplus.com.au)



## 8 Camera Home Security System with DVR

# Warranty Details

---

REGISTER YOUR PURCHASE AT [www.aldi.com.au/en/about-aldi/product-registration/](http://www.aldi.com.au/en/about-aldi/product-registration/) TO KEEP UP-TO-DATE WITH IMPORTANT PRODUCT INFORMATION



---

The product is guaranteed to be free from defects in workmanship and parts for a period of 12 months (dependant on product) from the date of purchase. Defects that occur within this warranty period, under normal use and care, will be repaired, replaced or refunded at our discretion. The benefits conferred by this warranty are in addition to all rights and remedies in respect of the product that the consumer has under the Competition and Consumer Act 2010 and similar state and territory laws.

Our goods come with guarantees that cannot be excluded under the Australian Consumer Law. You are entitled to a replacement or refund for a major failure and for compensation for any other reasonably foreseeable loss or damage. You are also entitled to have the goods repaired or replaced if the goods fail to be of acceptable quality and the failure does not amount to a major failure.

---

#### AFTER SALES SUPPORT

  1300 663 907

 [customercare@winplus.com.au](mailto:customercare@winplus.com.au)

MODEL: HE160233 PRODUCT CODE: 55207 03/2017





# Safety Instructions

## Read Instructions

Carefully read all safety instructions and the user manual before operation.

## Power Source

Only use the supplied power adaptors. Using other power adaptors may cause damage to the unit or potentially start a fire. For INDOOR use only. The socket-outlet shall be installed near the equipment and shall be easily accessible

## Do not expose the DVR Unit to Moisture

Avoid installing the DVR unit in a location with high humidity or in a location where liquid may spill onto the unit. Liquid may cause a short circuit which can result in electric shock or fire.

## Do not expose the DVR to Heat Sources

Do not install the DVR near any heat sources such as radiators, stoves or other appliances that can generate heat.

## Do not expose the DVR to Dust

Do not use the DVR unit in dusty areas as dust can impair electronic components.

## Cleaning the DVR Unit

Unplug all equipment from the wall outlet before cleaning. Do not use liquid aerosol cleaners. Use a damp soft cloth for cleaning.

## Lightning

Unplug all equipment during lightning storms to prevent damage. Unplug the DVR unit if it will not be used for long periods of time.

## Modifications & Attachments

Never add any attachments and/or equipment without the approval of the manufacturer.

Unauthorized modifications may result in fire, electric shock or other personal injury and may void your warranty.

## Ventilation

Do not block any ventilation holes. Do not place objects on top of the DVR unit or cover the ventilation holes on the sides of the DVR unit.

## Grounding Mounted Equipment


If mounting the DVR unit onto a rack, ensure the rack is properly grounded before turning the power on to prevent electric shock and fire when using the DVR unit.

## Do not open DVR Unit Case

There are no user serviceable parts inside the DVR unit. Modifying any parts may void your warranty.

**CAUTION**  
**RISK OF EXPLOSION IF BATTERY IS REPLACED**  
**BY AN INCORRECT TYPE.**  
**DISPOSE OF USED BATTERIES ACCORDING**  
**TO THE INSTRUCTIONS**

## After Sales Support

 1300 663 907

 [customercare@winplus.com.au](mailto:customercare@winplus.com.au)

Model Number HE160233

# Contents

<b>Warranty Details</b>	<b>4</b>
<b>Safety Instructions</b>	<b>5</b>
<b>Parts List</b>	<b>8</b>
<b>Camera Specifications</b>	<b>8</b>
<b>DVR Specifications</b>	<b>9</b>
<b>Product Overview</b>	<b>10</b>
1.1 DVR Front and Side Panel	<b>10</b>
1.2 DVR Rear Panel	<b>10</b>
<b>Installation</b>	<b>11</b>
2.1 Installation Location	<b>11</b>
2.2 DVR Unit Connections	<b>11</b>
<b>Using the DVR</b>	<b>13</b>
3.1 Mouse	<b>13</b>
3.2 Powering on the DVR unit	<b>13</b>
3.3 Setup Wizard	<b>13</b>
3.4 Main Screen	<b>13</b>
3.5 Navigating the DVR Menus	<b>14</b>
3.6 Quick Popup Menu	<b>14</b>
3.7 Logging in and setting 'Admin' password	<b>15</b>
3.8 Setting the Date and Time	<b>15</b>
<b>DVR Menu</b>	<b>16</b>
4.1 Main Menu	<b>16</b>
4.2 Setup	<b>17</b>
4.2.1 Basic	<b>17</b>
4.2.2 Live	<b>18</b>
4.2.3 Record	<b>19</b>
4.2.4 Schedule	<b>20</b>
4.2.5 Alarm	<b>21</b>
4.2.6 Network	<b>22</b>
4.2.7 Users	<b>24</b>
4.2.8 PTZ	<b>25</b>
4.2.9 Advanced	<b>26</b>

4.3 Search	26
4.4 Backup	27
4.5 Information	27
4.5.1 System	27
4.5.2 Event	27
4.5.3 Log	27
4.5.4 Network	28
4.5.5 Online Users	28
4.6 Disk Management	28
4.7 Logoff	28
4.8 Shutdown	28
<b>Networking</b>	<b>29</b>
5.1 Downloading the 'Cocoon DVR' App	30
5.2 Logging into a Cocoon DVR Account	30
5.3 Adding your DVR	30
5.4 Viewing your DVR	31
6.1 Installing Cocoon DVR for PC	32
6.2 Logging into Cocoon DVR for PC	32
6.3 Adding your Compact DVR to the Cocoon DVR for PC Software	33
6.4 Taking a Screenshot with Cocoon DVR for PC	34
6.5 Taking a Video with Cocoon DVR for PCs	34
6.6 Local Configuration	34
<b>FAQs</b>	<b>35</b>
<b>Glossary of Terms</b>	<b>37</b>
<b>Repair and Refurbished Goods or Parts Notice</b>	<b>38</b>

# Parts List


- |                           |   |                           |
|---------------------------|---|---------------------------|
| 1 x DVR Unit with 1TB HDD | 1 x 1m Ethernet Cable                   | 1 x Instruction Manual    |
| 8 x IR Cameras            | 1 x 1m HDMI Cable                       | 1 x Getting Started Guide |
| 8 x 18m BNC Cables        | 1 x Mouse                               | 1 x Software CD           |
| 2 x Power Adaptors        | 8 x Mounting Accessories for<br>Cameras | 1 x Warranty Card         |
| 1 x Power Splitter Cable  |   | 8 x CCTV Stickers         |



# Camera Specifications

- |                         |                         |
|-------------------------|-------------------------|
| Image Sensor:           | 1/3" Colour CMOS Sensor |
| Video Resolution:       | 976 x 496               |
| Video System:           | PAL                     |
| Infrared IRs:           | 24                      |
| Day/Night mode:         | Smart IR Cut Filter     |
| Night Vision Distance:  | Max 24m                 |
| Scan Frequency:         | 50Hz                    |
| Minimum Illumination:   | 0 Lux (IR On)           |
| Backlight Compensation: | Auto                    |
| Electronic Shutter:     | 1/50~10,000 AUTO        |
| Gain Control:           | Auto                    |
| Lens:                   | F=3.6 ~ 60 degrees      |
| Operating Temperature:  | -10 – 50C               |

**After Sales Support**

 1300 663 907


 [customercare@winplus.com.au](mailto:customercare@winplus.com.au)

**Model Number** HE160233

# DVR Specifications

Video Compression:	H.264
Video System:	NTSC/PAL Selectable
Operating System:	Linux (Embedded)
Video Input:	8 x composite BNC
Video Output:	1 x BNC composite 1 x HDMI 1 x VGA
Display Resolution:	800 x 600, 1024 x 768, 1280 x 720, 1280 x 1024, 1920 x 1080
Display: Speed:	25fps each camera
Record: Resolution:	960 x 576, 720 x 576
Record: Speed:	Selectable from 1 to 25 fps each channel
Recording Modes:	Continuous, Manual, Motion Detection
Playback Channels:	1/4/6/8 channel split screen
Network:	LAN, DHCP, Dynamic IP, DDNS and P2P
HDD Interface:	1 x SATA HDD, up to 4TB
Multiplex Operation:	Live display, Record, Playback, Backup and Network
USB:	3 x USB (for mouse and backup)
PTZ Control:	Built-in RS485
Mobile Surveillance:	Supports iOS & Android
Power Supply:	DC 12V/2A

## After Sales Support

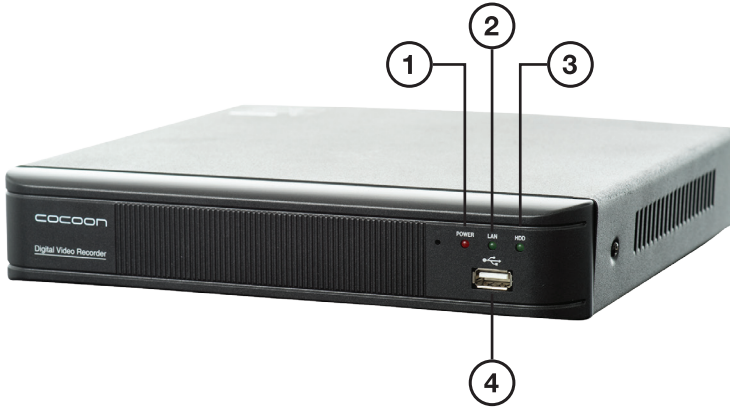
 1300 663 907

 [customercare@winplus.com.au](mailto:customercare@winplus.com.au)

**Model Number** HE160233

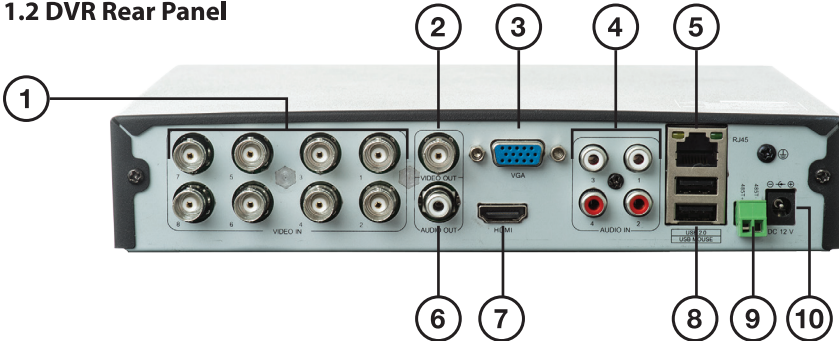
# Product Overview

## 1.1 DVR Front and Side Panel



- |                    |                  |
|--------------------|------------------|
| 1. Power Indicator | 3. HDD Indicator |
| 2. LAN Indicator   | 4. USB Port      |

## 1.2 DVR Rear Panel



- |                    |                    |
|--------------------|--------------------|
| 1. Video In (BNC)  | 6. Audio Out (RCA) |
| 2. Video Out (BNC) | 7. HDMI Port       |
| 3. VGA Port        | 8. USB Ports       |
| 4. Audio In (RCA)  | 9. RS485 Port      |
| 5. LAN Port        | 10. 12V Socket     |

### After Sales Support

1300 663 907



customercare@winplus.com.au

Model Number HE160233

# Installation

## 2.1 Installation Location

Before installing the Home Security System, it is essential to plan where to locate the DVR unit.

Below are a few points to consider:

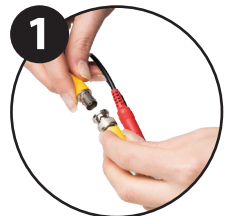
- The DVR unit should be positioned in a central location with easy access to mains power, cameras and installed cables
- If you plan to use remote viewing features, the DVR unit should be located near your modem / router or Ethernet network point
- The DVR unit should be installed in a secure location to avoid tampering
- Do not place heavy objects on top of the DVR unit
- Do not block ventilation holes on the top and sides of the DVR unit or use in an enclosed area as this may cause overheating
- Plan out where you would like to place your cameras and test all connections BEFORE permanently installing cables and cameras
- Cameras should be placed covertly indoors where you do not want to see them every day
- Outdoor cameras can be placed in plain sight to act as a deterrent to would-be intruders
- Must be connected to monitor for initial setup or administration in future

## 2.2 DVR Unit Connections

1. Connect each of the camera BNC extension cables to the video and power connectors taking note of the labelling on the extension cable
2. Connect the other end of the BNC extension cables to the port marked "Video In/Out"
3. Connect the 8-way power splitter to each of the BNC extension cables (red)
4. Connect the included HDMI cable to the back of the DVR unit and connect the other end of the cable to your monitor or TV

**NOTE:** You must switch your TV or monitor to the correct INPUT once the DVR unit has been powered on

**FOR EXAMPLE:** HDMI1



# Installation

5. Connect the mouse to the USB port (on the back of the DVR unit)
6. Connect the power adaptor to the 8-way splitter cable and plug into a mains outlet, then switch the outlet on

**NOTE:** Ensure you are connecting the power adaptor with the larger pin to the 8-way splitter cable

7. Connect the other power adaptor to the DVR unit labelled 12V - 5W and plug the other end into a mains outlet

8. Switch the outlet on. The DVR unit will begin the boot sequence

**NOTE:** Both the DVR unit and cameras operate 'always on'. To turn the cameras or DVR unit off, switch off the power adaptors at the power outlet



## TIPS:

Test all connections are working before permanently installing DVR unit and cameras. Position the DVR unit in a central location where all 8 cameras will reach. If using the optional networking features, make sure the modem is near the DVR unit



# Using the DVR

## 3.1 Mouse

1. USB Connection – connect cable to back of DVR unit
2. Left Mouse Button (LMB) – click to see main menu and make selections
3. Right Mouse Button (RMB) – click to return to previous screen or exit menu



**NOTE:** Front USB port is extension of rear mouse USB port (lower port). Do not use both simultaneously

## 3.2 Powering on the DVR unit

1. Connect the Power Adaptor to the back of the DVR unit
2. Plug the Power Adaptor into a mains power outlet and switch the outlet ON
3. Once Power Adaptor is connected to the DVR unit, it will proceed through the boot sequence



## 3.3 Setup Wizard

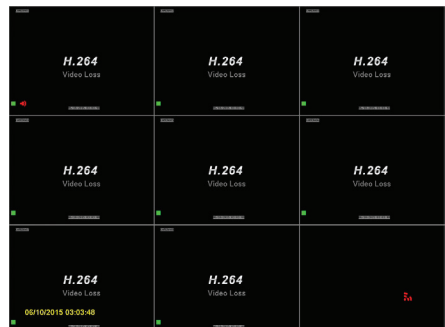
On the start-up screen, the Cocoon DVR System will run a setup wizard to assist in setting up some key features of the unit. This includes:

- Time & Date
- Record Schedule
- Maintenance Settings
- HDD Overwrite

You can enable or disable the setup wizard to be shown on start-up screen.

## 3.4 Main Screen

Once the DVR unit has finished the boot sequence, the main split screen display will appear. Each camera will be labelled CH1 to CH8



**TIP:** Once you're logged in, double clicking a camera view with LMB will switch to single full screen mode. Double click again to go back to split screen mode

# Operation

## 3.5 Navigating the DVR Menu

The way to navigate the DVR menu is by using the mouse. The mouse operates in much the same way as on your computer. Left-click to make selections and choose options. Right-click operates as a cancel or previous menu button. Any standard wired USB mouse will work with the DVR unit

**NOTE:** This manual assumes the user has connected the mouse to control the DVR unit.

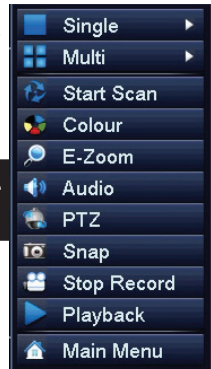
## 3.6 Quick Popup Menu

Right-clicking the mouse whilst on the viewing screen will show the pop-up menu for quick access to basic functions.

1. **Single** – Switch to single view mode. Select the camera to view
2. **Multi** – Switch to split screen mode

**TIP:** Alternatively, use the mouse and double click with LMB on the image to switch between the two modes

3. **Stop/Start Scan** – Automatically changes the single camera view at a selected interval. See 4.4.2 Live for more details
4. **Colour** – Adjust the colour settings of the selected camera
5. **E-Zoom** - Click and drag to draw a box in the bottom left window to zoom-in on the selection, right-click to return to full screen mode
6. **PTZ** - access PTZ (Pan Tilt Zoom) controls via shortcut. Must have PTZ camera (not included) installed and connected
7. **Snap** – Take a photo of the selected camera (A camera icon will show up indicating a photo has been taken)
8. **Start/Stop Record** – Start and Stop recording all channels (default settings) (A green square will show up indicating the camera is recording)
9. **Playback** – Enter playback mode to view recently recorded footage
10. **Main Menu** – Access the main menu to configure DVR settings





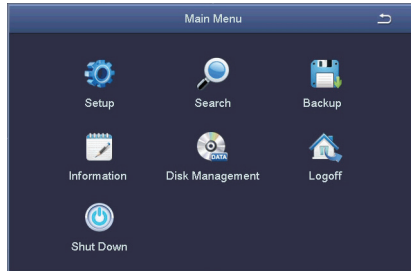
# DVR Menu

## 4.1 Main Menu

To access the main menu, right-click the viewing screen, select 'Main Menu' and enter your Username and Password.

**NOTE:** If you have not set a password, leave the field blank and click "Log In"

In the Main Menu, you can manage all DVR unit settings such as Display, Recording, Networking, etc.



Main Menu	Sub Menu
Setup	Basic
	Live
	Record
	Schedule
	Alarm
	Network
	Users
	PTZ
	Advanced
Search	
Backup	
Information	System
	Event
	Log
	Network
	Online Users
	<b>EXIT</b>
Disk Management	
Logoff	
Shutdown	

# DVR Menu

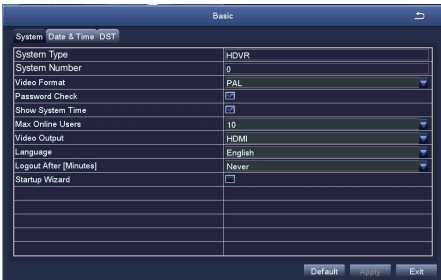
## 4.2 Setup

To access the Setup settings, select Setup from the Main menu. The Setup menu provides access to features relating to setting up your DVR in order to get the desired performance.

**IMPORTANT NOTE:** Always click 'Apply' after making any changes within the menu system. If you do not click 'Apply', your changes will not be saved



### 4.2.1 Basic



#### System:

Set the default system settings by selecting an option on the right hand side of the menu.

- **Max Online Users:** Limit the amount of simultaneous viewers of the DVR
- **Video Output:** Change your default output from 1024x768 to match your display



#### Date & Time:

Change the current date and time by clicking on the date and time boxes and following the on screen prompts.



#### DST:

Change the daylight saving's time settings by selecting enable, then clicking the settings boxes and following the on screen prompts.

### After Sales Support

1300 663 907

[customercare@winplus.com.au](mailto:customercare@winplus.com.au)

Model Number HE160233

# DVR Menu

## 4.2.2 Live

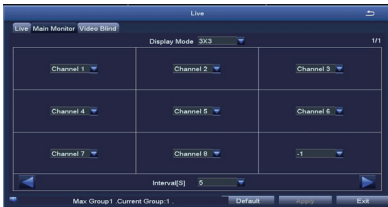


### Live:

- **Camera Name:** Label the selected camera (up to 32 characters)
- **Colour:** Click on 'Setting' to adjust Brightness, Hue, Saturation and Contrast settings for each camera

### Main Monitor:

- **Display Mode:** Select between 1x1, 2x2, 2x3 or 3x3 view



**NOTE:** If 1x1, 2x2 or 3x3 is used, Start/Stop Scan can be used on the viewing screen to automatically change between cameras.

- **Interval[S]:** Select the interval that Start/Stop Scan should use
- **Previous/Next Group:** If 1x1 or 2x2 display mode is used, cameras can be re-ordered for when Start/Stop Scan is used

### Video Blind:

- **Mask Area Setting:** Mask areas of the camera that you don't want recorded. Useful for hiding personal information from recordings. To activate, select 'Setting'; then use the mouse to draw a rectangle over the area you want 'masked'. To remove the masks, select 'Default' from the Live menu.

**Default** - Reset the displayed settings to factory defaults

**Apply** - After all changes are made, click the 'Apply' button to save

**Exit** - If you want to cancel after making any changes, click 'Exit' to exit the menu without changes

**IMPORTANT NOTE:** Always click 'Apply' after making any changes within the menu system. If you do not click 'Apply', your changes will not be saved

# DVR Menu

## 4.2.3 Record



### Enable:

Enable or disable recording function for each camera

**NOTE:** You can also install up to 4 microphones (not included) using the RCA ports on the rear of the DVR. Once installed, you can enable the audio recording here. The backup footage does not contain audio, only footage on the device contains audio

### Record Bitrate:

Allows you to adjust the resolution and recording stream for each camera

- **Resolution:** Supports D1 and 960H
- **FPS (Frames per Second):** Choose from 1 to 25 (PAL) or 1 to 30 (NTSC)

Maximum global framerate across 4 channels is 100fps for PAL and 120fps for NTSC

- **Encode:** Supports VBR (Variable Bit Rate) and CBR (Constant Bit Rate)
- **Quality:** Select your desired camera quality
- **Max Bitrate:** Higher bit rates use more hard drive space

### Stamp:

- **Camera Name:** Toggle the display of the camera name for each channel
- **Time Stamp:** Toggle the display of the time stamp for each channel
- **Position:** Use the mouse to drag the camera name and time stamp to any position on the live image. Right-click mouse to exit back to 'Record' page

### Recycle Record:

**If ticked:** When the hard drive is full, the DVR will automatically overwrite the earliest recorded files and continue recording

**If unticked:** When the hard drive is full, a warning message 'The remaining space is insufficient' will display and the DVR will stop recording

### Snap:

Adjust the snapshot settings used when pressing the 'Snap' button on the camera viewing screen

### After Sales Support

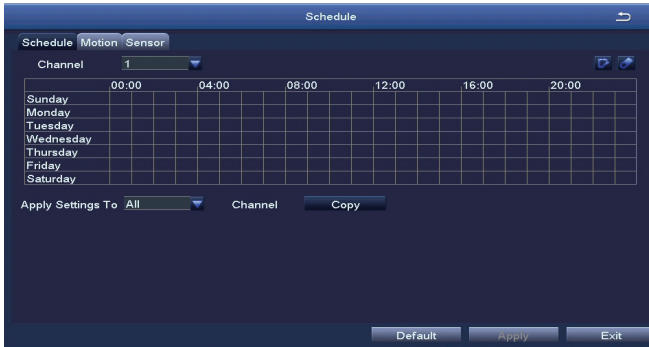
 1300 663 907

 [customercare@winplus.com.au](mailto:customercare@winplus.com.au)

**Model Number** HE160233

# DVR Menu

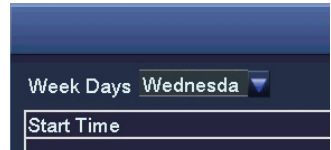
## 4.2.4 Schedule



Allows manual record and motion record to be scheduled

To set an active record time, follow these steps:

- a. Select 'Schedule' for manual recording or 'Motion' for motion recording schedule settings
- b. Double-click an area on the graph where you would like to schedule recording
- c. Ensure that the correct day is shown on the top left corner
- d. Select 'Add', then use the dropdown menu to set a start and end time
- e. Once set, press the tick button to add the time to the schedule
- f. To copy the schedule between days, use the dropdown menu at the top right corner to select a day, then press 'Copy'
- g. Press 'OK' when complete
- h. To copy the schedule between cameras, use the dropdown menu at the bottom of the schedule screen to select a camera, then select 'Copy'
- i. To save settings, press 'Apply'



**NOTE:** Time selected will be highlighted in blue blocks

**TIP:** You can select time blocks using the icons located on the top right hand corner



# DVR Menu

## 4.2.5 Alarm

### Sensor:

**NOTE:** The 8CH DVR allows up to 4 sensor circuits to be installed using the Audio-in RCA Ports

- **Enable:** Toggle which port is activated
- **Type:** Select No (Normally Open) or NC (Normally Closed), depending on circuit type
- **Holding Time [s]:** Select the duration that an alarm signal should be shown if triggered
- **Trigger:** Allows “buzzer”, “show full screen”, “to alarm out”, “email” or “snap” settings to be set
- **Schedule:** Set the time that sensor detection will activate the alarm

See 4.2.4 for details on setting a schedule



### Motion:

- **Enable:** Toggle which camera’s alarm sensor is on or off
- **Holding Time[s]:** Select the duration that an alarm signal should be shown if triggered
- **Trigger:** Allows “show full screen”, “email” and “snap” settings to be set
- **Area:** In this interface, blue grid boxes indicate areas that are monitored for movement. Hold on to LMB and drag mouse across screen to adjust selection

**TIP:** Removing blue grid boxes disables the area monitored for movement. This is handy for cameras facing main roads with cars driving past when monitoring your front porch

Right-click for pop up bar to adjust motion sensitivity, resetting grid to default and saving settings

- **Schedule:** Set the times that motion detection will activate the alarm. See 4.2.4 for details on setting a schedule

### Video Loss:

Configure how video loss is handled by the DVR

### Other Alarm:

Configure how other events are handled by the DVR

### After Sales Support

 1300 663 907

 [customercare@winplus.com.au](mailto:customercare@winplus.com.au)

**Model Number** HE160233

# DVR Menu

## 4.2.6 Network

Refer to page 28 for networking steps. With peer to peer (P2P) networking, it's now even easier to network your DVR for remote viewing. Below is a table showing available networking methods.

Simply select the most applicable for your needs, and follow the setup procedure.

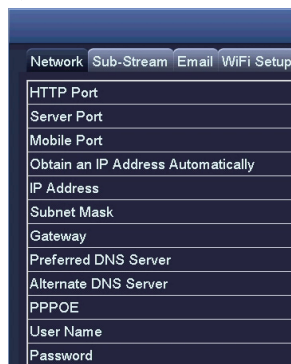
	 COCOON DVR		 COCOON DVR for PCs
<b>OS Compatibility</b>	Android 2.3+	iOS 6.0+	Windows XP +
<b>Setup Difficulty</b>	Easy		Moderate
<b>P2P Setup</b>	✓ <sup>1</sup>		✓
<b>Remote Viewing</b>	✓		✗
<b>Setup Procedure</b>	5. Using Cocoon DVR Mobile App		6. Using DVR with Cocoon DVR Software

<sup>1</sup>QR Code allows for even easier setup

### Network:

Configure your network settings here.

- **HTTP Port:** Default value is 80
- **Server Port:** Default value is 5000
- **Mobile Port:** Default value is 5001
- **Obtain an IP Address Automatically:** To obtain the IP function automatically
- **IP Address:** To set the IP address of the device
- **Subnet Mask:** To set the subnet mask of the device
- **Gateway:** To set the default gateway of the DVR
- **Preferred DNS Server:** This address is provided by your network operator and must be filled in when using mobile monitoring
- **Alternate DNS Server:** This address is provided by your network operator
- **PPPOE:** When enabled, the DVR will automatically establish a network connection in the form of PPPOE, then the IP address can be seen through Main Menu > View Information > Network Status
- **Username:** For PPPOE mode, enter the ISP (Internet Service Provider)
- **Password:** For PPPOE mode, set password
- **Test:** Check whether the entered IP address and PPPOE information are valid or not



### After Sales Support

1300 663 907

[customercare@winplus.com.au](mailto:customercare@winplus.com.au)

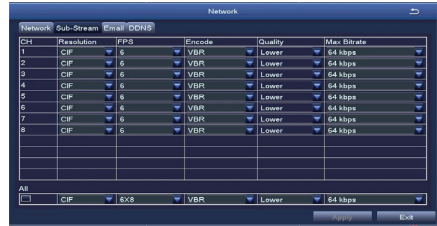
**Model Number** HE160233

# DVR Menu

## Sub-Stream:

Defines which channels are displayed over the web along with frame rates and bitrates.

- **Resolution:** Supports CIF only
- **FPS:** Set framerate to send over the network, frame rates depend on the host and local bandwidth
- **Encode:** Supports VBR and CBR
- **Quality:** Select between Higher, Medium, Low, Lower, Lowest
- **Max Bitrate:** Set the maximum bitrate that each channel will transmit



## Email:

The Cocoon Home Security System can email you motion alerts if settings are enabled. Contact your network administrator if you do not have this information.

- **SMTP Server:** Enter your server details. eg: smtp.gmail.com
- **Port:** Enter your SMTP port number
- **SSL Check:** Enable if your server uses SSL
- **Send Address:** Email address notifications sent from
- **Password:** Email Password
- **Receive Address:** Email address the alerts will be send to
- **Test:** Check whether the entered SMTP information is valid or not

## DDNS:

Some internet providers operate using DDNS or Dynamic DNS IP addresses. As opposed to a fixed Static IP, a DDNS IP is dynamic and constantly changing. This type of IP address is a problem for your DVR unit unless you setup a service to manage this. Fortunately there are many services available that can do this for you. However, some may ask for a nominal fee for their services.

- **DDNS:** Toggle to enable/disable the DDNS settings
- **DDNS server:** Choose your DDNS provider from the drop down list
- **Username:** Enter your DDNS provider username
- **Password:** Enter your DDNS provider password
- **Host Domain:** Enter your host name provided by your DDNS provider
- **DDNS Update [Hours]:** Set the frequency that the DVR should check for DDNS updates
- **UPNP:** Toggle to enable/disable UPNP

# DVR Menu

## 4.2.7 Users

Configure all user settings using the following steps. Your Cocoon Home Security System is able to limit specific MAC addresses for additional security.

### Adding a new user:

- a. Press the 'Add' button at the bottom of the User Management submenu
- b. Set the User Name as desired, then input the desired password
- c. Select between Normal and Advanced user type:

**Normal:** Allows remote login and local log in to view cameras

**Advanced:** Allows full access to view cameras, search logs, file management, except for being able to shut down the DVR

For more specific settings, such as being able to shutdown the DVR, select the 'Authority' tab and configure access control for each camera and feature

- d. **Optional:** Bind the user to a specific MAC address by enabling 'Binding PC MAC Address' and entering the MAC address below
- e. Press 'OK' to add new user

### Deleting a user:

Whilst logged into your DVR's admin account, highlight an existing user by clicking on the user with the mouse. Press the 'Delete' button and then press 'OK' to confirm.

### Changing a user's password:

Whilst logged into the user's account, highlight an existing user by clicking on the user with the mouse. Press the 'Change Password' button and enter the old password, as well as your new password. Press 'OK' to confirm.

# DVR Menu

## 4.2.8 PTZ



This DVR unit is compatible with PTZ (Pan, Tilt & Zoom) cameras (not included). Access this page to configure the PTZ camera settings. Please note that the PTZ device can be activated only when a channel in connection with the PTZ camera is selected. Consult the manual of your PTZ camera for correct settings.

### Serial Port:

- **Address:** Select channel of the PTZ camera
- **Baud Rate:** Select the baud rate which the PTZ camera operates. Please check the PTZ camera specs or manual for this information
- **Protocol:** Select the required protocol for the PTZ camera
- **Simulative Cruise:** Also known as patrol mode. Select to enable/disable this feature

### Advanced:

Configure pre-set camera orientations, cruise lines and track settings.

### Preset:

Press the 'Setting' button to set a position for the PTZ camera. Adjust the PTZ location to your desired position, then press the Save button to confirm.

**NOTE:** A maximum of 128 orientations can be pre-set

### Cruise:

Press the 'Add' button to add cruise lines to a camera.

**NOTE:** A maximum of 8 cruise lines can be added

# DVR Menu

## 4.2.9 Advanced

**Reset:** Reset all settings to factory default.

**Import/Export:** Export the parameters of your device onto a removable storage device.

- a. Insert a USB flash drive up to 32GB into the rear of the DVR
- b. Select the 'Import' or 'Export' button to import or export your DVR settings

## 4.3 Search

To access the 'Search' settings, select 'Search' from the Main Menu. Choose the tabs at the top to switch between sub-menus. The 'Search' menu provides access to playback recordings and backup to flash drive.

**NOTE:** The DVR may take some time to retrieve all of your recordings

### Time Search:

Search for footage recorded on a given day.

- a. On the right hand side, select the date to search, then press 'Search'
- b. Light blue bars indicate found recordings. Using the mouse, select a start time on the display
- c. Press the play button to commence playback

### Event Search:

Search for motion events that the DVR has detected.

- a. On the right hand side, select the date to search, then press 'Search'
- b. A list of detected motion recordings will be shown. Double-click on an entry to commence playback

### File Management:

Search for footage files that have been recorded by the DVR.

- a. On the right hand side, select the date to search, then press 'Search'
- b. A list of footage files will be shown. Double-click on an entry to commence playback

**NOTE:** To delete recorded footage, select by ticking a file, then pressing the 'Delete' button. Press 'OK' to confirm.

### Image:

Search for images captured on the DVR.

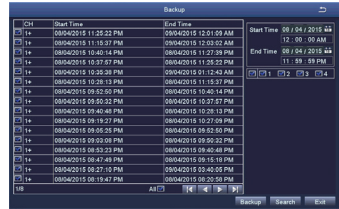
- a. On the right hand side, enter the start and end times to search, then press 'Search'
- b. A list of image files will be shown. Double-click on a file to view

# DVR Menu

## 4.4 Backup

Backup allows you to transfer recordings to a USB flash drive up to 32GB.

- Insert a USB flash drive into the rear of the DVR unit
- On the right hand side, enter the start and end times to search, then press 'Search'
- A list of footage files that have been recorded by the DVR will be shown. Select your desired files for export by ticking the file
- Once selected, press the 'Backup' button, then press 'Start'
- Wait until the backup is complete before exiting and removing the USB flash drive



**NOTE:** If the USB has insufficient space for transfer, select 'Disk Cleanup'. Files can now be highlight and deleted using the 'Delete' button

**NOTE:** Front USB port is extension of rear mouse USB port (lower port). Do not insert flash drive into rear lower USB port if mouse is connected to the front port

**NOTE:** the backup footage does not contain audio, only footage on the device contains audio

## 4.5 Information

### 4.5.1 System

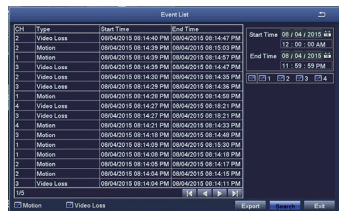
Displays system information of the DVR. If you are wanting to setup the DVR to be viewed on a smartphone, three QR codes allow easy set up for mobile monitoring. For more information, refer to page 30 for mobile setup & app for DVR



### 4.5.2 Event

Search for motion and video loss logs that have occurred on the DVR.

- On the right hand side, select the date to search, then press 'Search'
- A list of log files will be shown. Double-click on an entry for more information



### 4.5.3 Log

Search for operational logs that have occurred on the DVR.

- On the right hand side, select the date to search, then press 'Search'
- A list of log files will be shown. Double-click on an entry for more information

**NOTE:** A log file can be exported to a USB flash drive using the 'Export' button

# DVR Menu

## 4.5.4 Network

Displays a list of your DVR's current network settings. This is useful to confirm which IP address your DVR has been assigned.

## 4.5.5 Online Users

Displays a list of current users viewing the DVR.

Press the 'Refresh' button to update the generated list of viewers.

## 4.6 Disk Management

Check the free space available on your 4TB internal HDD.

You can also check space available on an inserted USB flash drive.

## 4.7 Logoff

In order to change between users, select the 'Logoff' button, then press 'OK' to confirm.

## 4.8 Shutdown

In order to safely shut down the DVR, select the 'Shut down' button, then press 'OK' to confirm.





# Networking

The powerful Cocoon Home Security System features advanced settings for viewing footage over the internet and on supported 3G/4G enabled mobiles and tablets. Network setup is the most technically involved feature of the DVR unit and requires some working knowledge of networking and modifying modem / router settings. The next few pages will explain the basic features and setup of remote viewing. Visit our website for further details on networking and DVR unit setup at [www.winplus.com.au](http://www.winplus.com.au)


**IMPORTANT NOTE:** In order to use networking features of this DVR unit, you must connect the DVR unit to a high-speed internet connection. To view on mobiles or tablets, your mobile network must support mobile data at 3G recommended speeds. It is the user's responsibility to ensure their mobile coverage is suitable for use with the DVR unit. Winplus Australasia is not responsible for any additional data charges that may be incurred. If possible, Winplus suggests connecting your mobile or tablet via Wi-Fi before viewing remotely.

With peer to peer (P2P) networking, it's now even easier to network your DVR for remote viewing. Below is a table showing available networking methods. Simply select the most applicable for your needs, and follow the setup procedure.

	 <b>Cocoon DVR</b>		 <b>Cocoon DVR for PCs</b>
<b>OS Compatibility</b>	Android 2.3+	iOS 6.0+	Windows XP +
<b>Setup Difficulty</b>	Easy		Moderate
<b>P2P Setup</b>	✓ <sup>1</sup>		✓
<b>Remote Viewing</b>	✓		✗
<b>Setup Procedure</b>	5. Using Cocoon DVR Mobile App		6. Using DVR with Cocoon DVR PC Software

<sup>1</sup>QR Code allows for even easier setup

## After Sales Support

 1300 663 907

 [customercare@winplus.com.au](mailto:customercare@winplus.com.au)

**Model Number** HE160233

# Networking - Mobile

## 5.1 Downloading the 'Cocoon DVR' App

- a. On the DVR main menu, press 'Information', then 'System'
  - iOS:** Using a QR code reader, scan the iOS QR code to download the app 'Cocoon DVR'
  - Android:** Using a QR code reader, scan the Android QR code or open the Google Play store and search for 'Cocoon DVR'. Download the app
- b. Click on the app icon to launch the app



## 5.2 Logging into a Cocoon DVR Account

- a. If you don't have a Cocoon DVR Account, use the 'Register' button and input the required fields to create a new username and password

**NOTE:** The Cocoon DVR Account does not need to be the same as your DVR user account

- b. Enter your User ID and Password into their respective fields. To remember your password for quick access, press the tick icon
- c. Press the Login button to login



## 5.3 Adding your DVR

Adding your DVR is simple, with P2P connectivity. Ensure an ethernet cable is plugged into the back of the DVR in the 'RJ45' port.

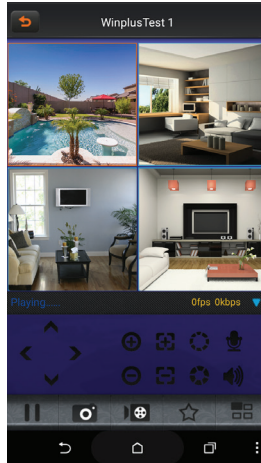
- a. On the DVR Main Menu, navigate to Information > System. You will notice a 'Device ID' QR code on the bottom right hand side
- b. On the Cocoon DVR Main Menu, select 'Device Manage'
- c. Select the menu icon on the bottom left of the app, then select 'Add Device'
- d. Give your DVR an alias of your choice, then select the QR code icon in the UMID field
- e. Your smartphone's camera will open. Scan the Serial ID QR code shown on your DVR display
- f. Input a valid User ID and Password. **This must be the same as a user account that is present on the DVR**
- g. Select '8' channels, and 'Main', then press the 'Save' icon on the top right corner of your screen to add your DVR



# Networking - Mobile

## 5.4 Viewing your DVR

- a. Ensure the DVR and your smartphone are connected to the internet
- b. On the Cocoon DVR Main Menu, select 'Live view'
- c. Select the alias that you have chosen for the DVR you wish to view
- d. Select 'All camera' to view all eight cameras

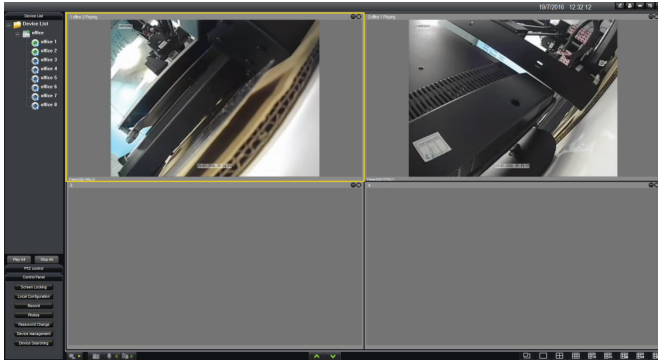


**TIP:** Double tap on the desired camera for full screen view

For advanced guides and video walkthroughs, please visit [www.winplus.com.au](http://www.winplus.com.au)

# Networking - Cocoon DVR for PC

The DVR is compatible with **Cocoon DVR** for Windows PC Software. It allows you to connect and view your DVR with a Windows PC (Running Windows XP, Windows 7, Windows 8 and Windows 10). Adding your DVR is simple with P2P connectivity.



- a. Plug one end of the Ethernet cable into the back of the DVR into the 'RJ45' Port
- b. Plug the other end of the Ethernet cable into your network router's LAN Ports

## 6.1 Installing Cocoon DVR for PC

- a. Insert the CD Rom into your PC
- b. Open file explorer on your PC and navigate to the CD Directory
- c. Double click and install the **Cocoon DVR**
  1. Follow the on screen instructions
  2. Select Create Desktop Icon

## 6.2 Logging into Cocoon DVR for PC

If you have already installed the **Cocoon DVR** APP for iOS or Android and registered an account, the same account can be used for Cocoon DVR for your PC (see Section 5.2).

- a. If you don't have a **Cocoon DVR** Account, use the 'Register' button and input the required fields to create a new username and password

**NOTE:** The Cocoon DVR Account does not need to be the same as your DVR user account

- b. Enter your User ID and Password into their respective fields.

**NOTE:** To remember your password for quick access, press the tick icon

- c. Press the Login button to login

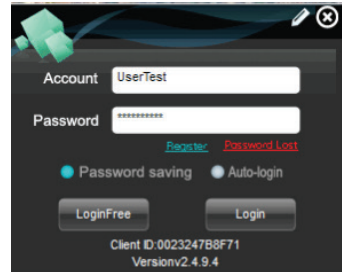
# Networking - Cocoon DVR for PC

## 6.3 Adding your Compact DVR to the Cocoon DVR for PC Software

If you have already added your DVR with the **Cocoon DVR APP** for iOS or Android, then your DVR will also be shown on the software **Cocoon DVR** for PC, and you will not be required to add it again.

To add your DVR on a **LOCAL NETWORK** (i.e. The computer running Cocoon DVR for PC is connected to the same Router as the DVR), follow the steps below:

- a. Click 'Device Searching' found on the bottom left hand side of the Cocoon DVR for PCs software
- b. Click 'Search'
- c. Your DVR should appear on the list
- d. Select your DVR and click 'Add to the List'
- e. The software will display the settings of your DVR to be verified. Ensure the Username and Password of your DVR is correct. Click Add to confirm
- f. The DVR should now appear on your Device List. Expand and Double Click the individual cameras to view footage on your PC



To add your DVR on a **REMOTE NETWORK** (i.e. the computer running Cocoon DVR for PC is connected to a DIFFERENT Router as the DVR), follow the steps below:

- a. Click 'Device Management' found on the bottom left hand side of the Cocoon DVR for PCs software
- b. Click 'Add the Camera'
- c. Enter in the Settings for your DVR
  - **Device Name:** an Alias for your DVR (e.g. 'Office' or 'Home')
  - **Device Type:** Device
  - **Connection:** P2P
  - **Cloud ID:** As per section 5.3.a (Pg. 30), this is found in your DVR. Navigate your DVR to Main Menu > Information > System. You will see a Device ID Code on the screen. Enter this Alphanumeric Code in exactly
  - **Username:** same as your DVR (default is admin unless changed)
  - **Password:** same as your DVR ( default is left blank unless changed)
  - **Channel Number:** 8
  - **Stream:** Main
- d. Click 'Add' and your DVR should now appear on your Device List. Expand and Double Click the individual cameras to view footage on your PC

# Networking - Cocoon DVR for PC

## 6.4 Taking a Screenshot with Cocoon DVR for PC

While viewing a camera feed, highlight a channel by clicking on it with your computer's mouse. The channel will have a yellow box surrounding it. Press the Camera Button on the Lower Left Hand Side of the screen to take a screenshot.

To view pictures, click on Photos and either select a specific date, or View All, to see Photos taken.

## 6.5 Taking a Video with Cocoon DVR for PCs

While viewing a camera feed, highlight a channel by clicking on it with your computer's mouse. The channel will have a yellow box surrounding it. Press the Video Record Button on the Lower Left Hand Side of the screen to record a video. The button will change from a Green Play Arrow to a Red Record Circle.

To view videos, click on Record and select 'Local Record'. Select either 'Today' for today's recordings, or 'Query All' for all videos that have been recorded. Select the video you wish to watch and select 'Play'.

## 6.6 Local Configuration

You can locate the Photo and Videos via 'Local Configuration' and even change this to save in new locations. All Photos are in JPG format and Videos are in DAT format.

Visit [www.winplus.com.au](http://www.winplus.com.au) for additional tips and help with networking.

There will be an instruction guide and a setup tutorial video to assist in networking setup.

# FAQs

Question	Solution
I have no picture	<ul style="list-style-type: none"> <li>• Check that power is on and the Power LED is lit up</li> <li>• Check the HDMI cable is connected properly in both the DVR unit and your television</li> <li>• Set the TV or monitor to the correct video input channel. On most TV's, you can change inputs by pressing the button labelled source, input, A/V, channel 0 etc</li> </ul>
I have no power	Make sure the power adaptor is connected to the back of the DVR and the other end is plugged into a socket that is turned on
Why are some camera images discoloured?	Your cameras are equipped with a night vision filter to help them see at night. This can make some colours appear discoloured. Try adjusting the colour settings in the display menu
My night vision image is very dark or just a black screen	The cameras will work to about 24m in the dark. If you are getting a dark image, the camera may be aimed at a target further than 24m away. Try aiming it closer or down towards the ground to make sure they are working
My night vision image is very bright and I can't see anything when aimed out a window	The infrared light is bouncing off the window and reflecting back into the camera. Either place the camera on the other side of the window or make sure the camera face is flush with the glass surface
Motion Detection settings keep recording all night long	Night vision uses infrared light to 'see' an image at night. It relies on small amounts of ambient light to function correctly. The less light there is, the harder it is for the camera to see an image. This can result in artefacts in the image. If there are too many artefacts and motion recording keeps triggering, try adjusting the sensitivity settings in the 'Alarm Area Menu' to a lower value. See page 21 for instructions
Where do I place my cameras?	Camera placement depends on your application. For homes, suggested camera placements are near doorways, under eaves looking down the driveway, in backyards or in a child's room. For small businesses, high traffic areas near doorways, over cash registers, or down aisles are suggested
Can I add more cameras?	The Cocoon DVR Unit accepts up to 8 cameras. You can replace any of the cameras with other cameras, however there is no way to add additional channels to the DVR

# FAQs

<p>What is a PTZ camera?</p>	<p>PTZ or Pan / Tilt / Zoom cameras are generally high end cameras that allow you to aim the camera where you want and zoom in. The DVR has built-in functions to control the PTZ features when connected to the RS485 Port</p>
<p>My hard drive is full</p>	<p>If your hard drive fills up you can either format the hard drive or turn on the Overwrite feature. Setting Overwrite to 'Enable' will overwrite the oldest footage first to ensure there is no down time. Turning motion detection on will only record when motion is detected saving additional hard drive space</p>
<p>Can I add a bigger hard drive?</p>	<p>Yes, the Cocoon DVR Unit accepts HDD's up to 2TB in size. If you are unfamiliar with hard drives and changing computer components, we strongly suggest you consult a professional. Any damage or modifications to the internal components may void your warranty. Always ensure there is no power to the DVR unit when opening the casing</p>
<p>How long will my DVR record?</p>	<p>Depending on your recording settings, resolution and number of cameras, you can record for up to 90 days on the lowest settings, or approximately 3.5 days on the highest settings. We recommend setting motion detection to 'enable' to record only when motion is detected. This will allow you to record even longer</p>
<p>We have changed the password but we do not remember what it is</p>	<p>If you have forgotten your password, contact Winplus Technical Support for assistance on 1300 663 907</p>
<p>How can I share security footage with others?</p>	<p>To view the footage on your computer or send an AVI to other parties such as the police, refer to page 27</p>



# Glossary of Terms

## DVR

The main unit is a DVR or Digital Video Recorder. It has all of the smarts to detect motion, record, playback and connect to the internet

## CCTV

CCTV or closed-circuit television uses video cameras to view on a monitor. The DVR can then be used to record the images

## Camera

The connectors used by the DVR and cameras are camera connectors. They are quick turn and attach or release connectors

## Night Vision

The cameras are equipped with infrared LEDs which emit light the human eye cannot see. This allows vision in low light or “night vision”

## PTZ Control

Some higher end cameras are equipped with PTZ or Pan / Tilt / Zoom functionality. When connected to the DVR, the DVR can be used to control the camera

## Motion Recording

The DVR is equipped with motion detection technology. When enabled, if motion occurs in the vision of the camera, the DVR will begin recording



## 8 Camera Home Security System with DVR

# Repair and Refurbished Goods or Parts Notice

---

Unfortunately, from time to time, faulty products are manufactured which need to be returned to the Supplier for repair.

Please be aware that if your product is capable of retaining user-generated data (such as files stored on a computer hard drive, telephone numbers stored on a mobile telephone, songs stored on a portable media player, games saved on a games console or files stored on a USB memory stick) during the process of repair, some or all of your stored data may be lost.

**We recommend you save this data elsewhere prior to sending the product for repair.**

You should also be aware that rather than repairing goods, we may replace them with refurbished goods of the same type or use refurbished parts in the repair process.

**Please be assured though, refurbished parts or replacements are only used where they meet ALDI's stringent quality specifications.**

If at any time you feel your repair is being handled unsatisfactorily, you may escalate your complaint. Please telephone us on 1300 663 907 or write to us at:

Winplus Australasia

PO Box 537 Bayswater Business Centre, Victoria, Australia

1300 663 907 - Hours: Mon-Fri 8:30am - 6:00pm AEST

[customercare@winplus.com.au](mailto:customercare@winplus.com.au)

---

#### AFTER SALES SUPPORT

1300 663 907

[customercare@winplus.com.au](mailto:customercare@winplus.com.au)

MODEL: HE160233 PRODUCT CODE: 55207 03/2017





 cocoon™