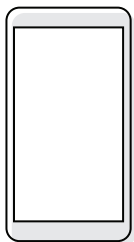


1. BEFORE YOU START

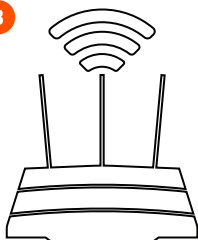
1



2



3



4



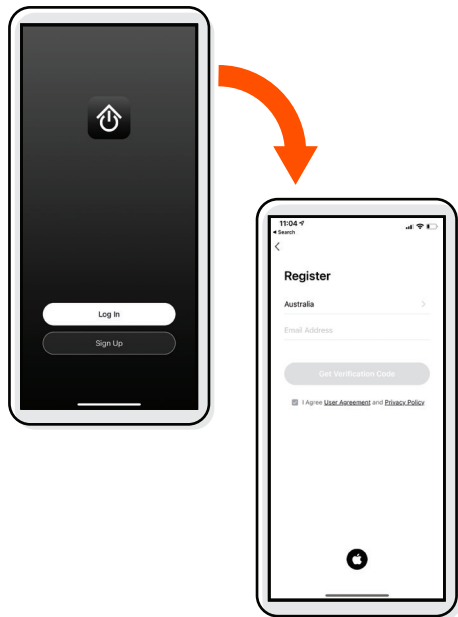
Scan this code
or search for
Cocoon Connect

Before you begin, make sure you have:

1. A mobile device - Android (V4.4 or later) or iOS (V10.0 or later)
2. A USB power source to charge the camera
3. A Wi-Fi connection (have the password handy)
4. Download the Cocoon Connect app

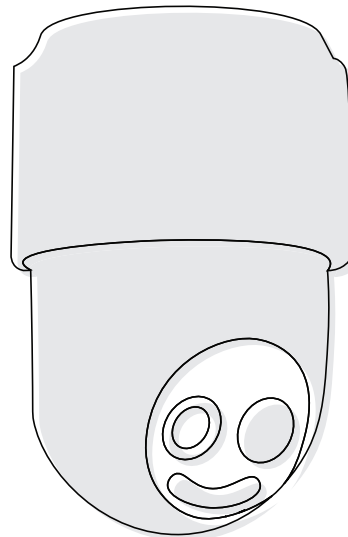
For detailed instructions and videos, visit www.cocoonproducts.com.au

2. APP SETUP



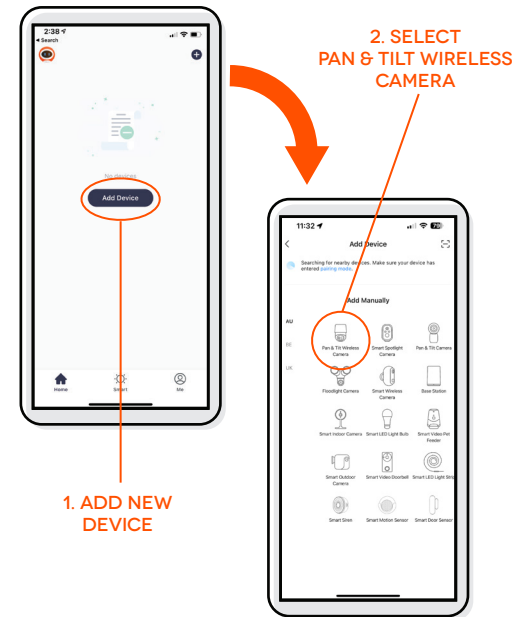
First time users:
Register an account and follow the remaining prompts on screen

3. CONFIRM PAIRING MODE



- The LED indicator light will be flashing red. The camera will say 'The camera is now ready to begin pairing'
- If you have issues with this step, hold down the internal reset button for 5 seconds and start again
- If you are still having issues, please check your instruction manual

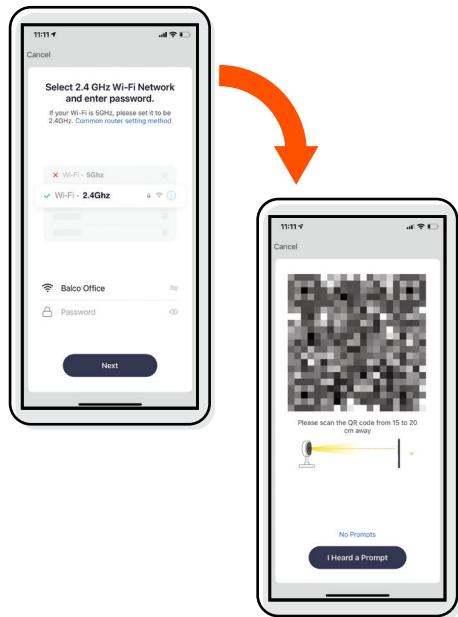
4. ADD THE CAMERA



1. ADD NEW DEVICE

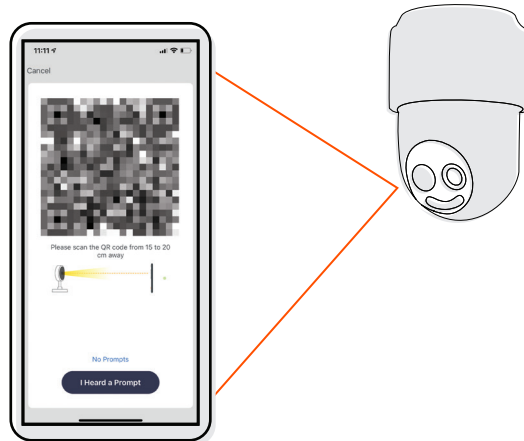
2. SELECT
PAN & TILT WIRELESS
CAMERA

5. CONNECT CAMERA TO WIFI



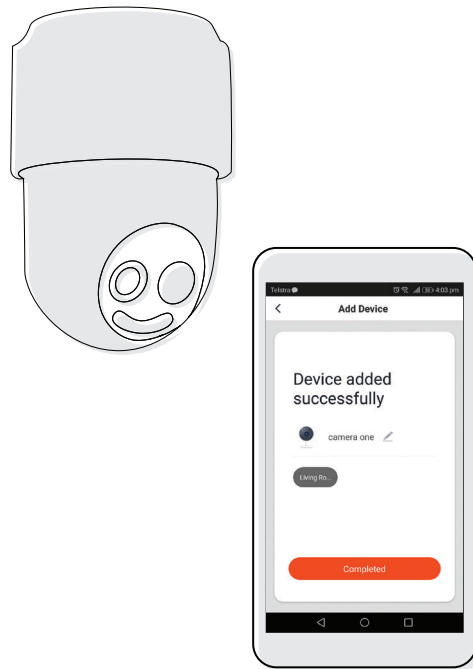
If you have any issues with this step, ensure your password is correct
If you are still having issues, please check your Instruction Manual

6. SCAN QR CODE WITH CAMERA

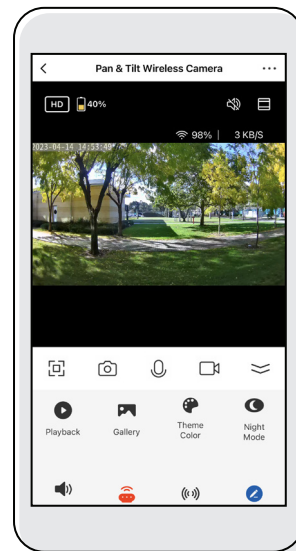


1. Hold the mobile phone 15 to 20cm in front of the Pan & Tilt Wireless Camera for the camera to scan the QR code
2. Camera will beep when the code is scanned
3. Press 'Heard the prompt'

7. CAMERA ADDED SUCCESSFULLY



8. CONTROL YOUR PAN & TILT WIRELESS CAMERA



Use, manage and control your Pan & Tilt Wireless Camera from the Cocoon Connect app. If you need further information, please read the full Instruction Manual or contact After Sales Support on **1300 320 178** or via email at help@cocoonproducts.com.au